

SLC16A11 RABBIT PAB

货号: S220918

产品全名: SLC16A11 兔多抗

基因符号 MCT11; MCT 11

UNIPROT ID: Q8NCK7 (Gene Accession - NP_699188)

背景: Enables pyruvate transmembrane transporter activity. Involved in lipid metabolic process. Located in endoplasmic reticulum membrane and plasma membrane.

抗原: Synthetic peptide of human SLC16A11

经过测试的应用: ELISA, WB, IHC

推荐稀释比: IHC: 50-200;WB: 1000-5000;ELISA: 5000-10000

种属反应性: Rabbit

克隆性: Rabbit Polyclonal

亚型: Immunogen-specific rabbit IgG

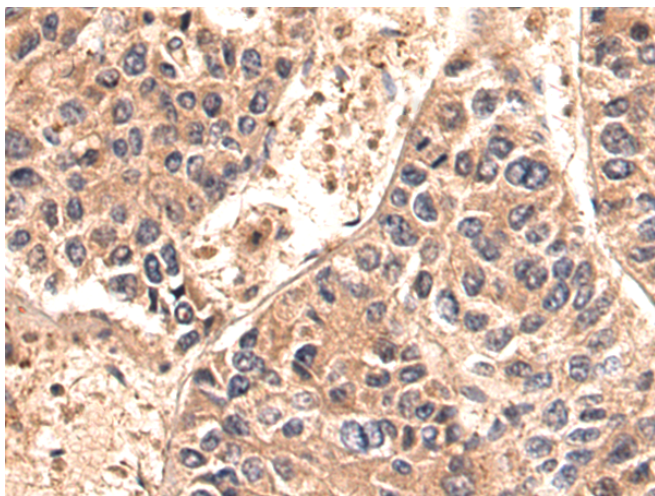
纯化: Antigen affinity purification

种属反应性: Human, Mouse

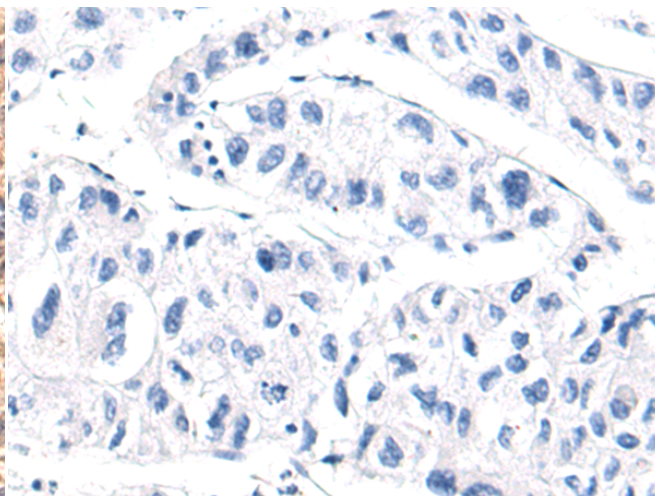
成分: PBS (without Mg²⁺ and Ca²⁺), pH 7.4, 150 mM NaCl, 0.05% Sodium Azide and 40% glycerol

研究领域: Metabolism

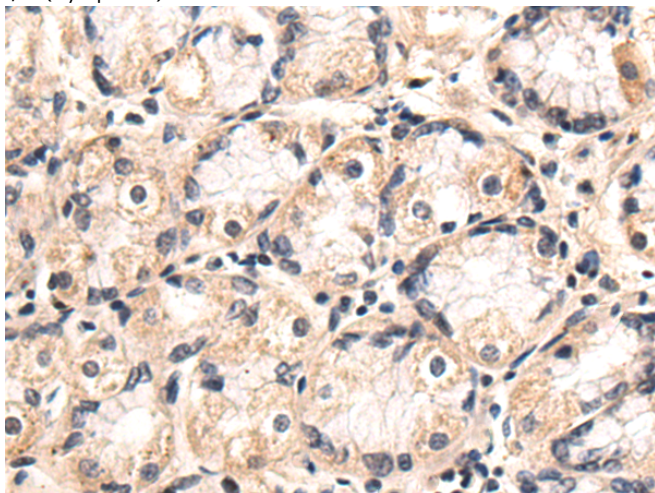
储存和运输: Store at -20°C. Avoid repeated freezing and thawing



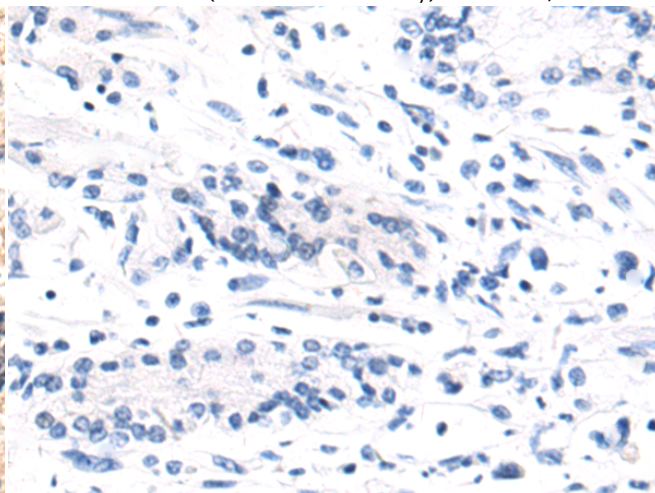
Immunohistochemistry analysis of paraffin embedded Human liver cancer tissue using 220918(SLC16A11 Antibody) at a dilution of 1/50(Cytoplasm).



In comparison with the IHC on the left, the same paraffin-embedded Human liver cancer tissue is first treated with the synthetic peptide and then with 220918(Anti-SLC16A11 Antibody) at dilution 1/50.

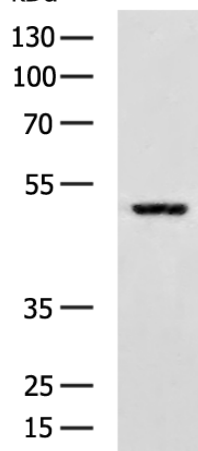


The image on the left is immunohistochemistry of paraffin-embedded Human gastric cancer tissue using 220918(Anti-SLC16A11 Antibody) at a dilution of 1/50.



In comparison with the IHC on the left, the same paraffin-embedded Human gastric cancer tissue is first treated with synthetic peptide and then with D262216(Anti-SLC16A11 Antibody) at dilution 1/50.

kDa



Gel: 12%SDS-PAGE, Lysate: 40 µg;
Lane: Mouse kidney tissue lysate;
Primary antibody: 220918(SLC16A11 Antibody) at dilution 1/1200;
Secondary antibody: HRP-conjugated Goat anti rabbit IgG at 1/5000 dilution;
Exposure time: 5 seconds



Product Description

Pioneering GTPase and Oncogene Product Development since 2010
