

SLC12A7 RABBIT PAB

货号: S222278

产品全名: SLC12A7 兔多抗

基因符号 KCC4

UNIPROT ID: Q9Y666 (Gene Accession - NP_006589)

背景: Mediates electroneutral potassium-chloride cotransport when activated by cell swelling. May mediate K⁺ uptake into Deiters' cells in the cochlea and contribute to K⁺ recycling in the inner ear. Important for the survival of cochlear outer and inner hair cells and the maintenance of the organ of Corti. May be required for basolateral Cl⁻ extrusion in the kidney and contribute to renal acidification (By similarity).

抗原: Synthetic peptide of human SLC12A7

经过测试的应用: ELISA, IHC

推荐稀释比: IHC: 25-100; ELISA: 5000-10000

种属反应性: Rabbit

克隆性: Rabbit Polyclonal

亚型: Immunogen-specific rabbit IgG

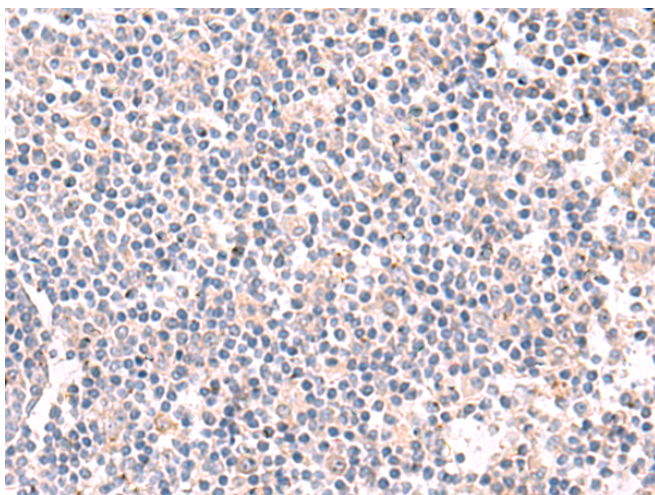
纯化: Antigen affinity purification

种属反应性: Human

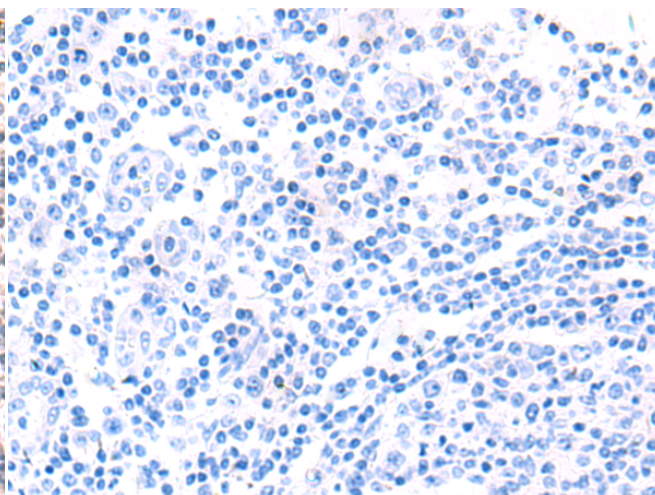
成分: PBS (without Mg²⁺ and Ca²⁺), pH 7.4, 150 mM NaCl, 0.05% Sodium Azide and 40% glycerol

研究领域: Neuroscience

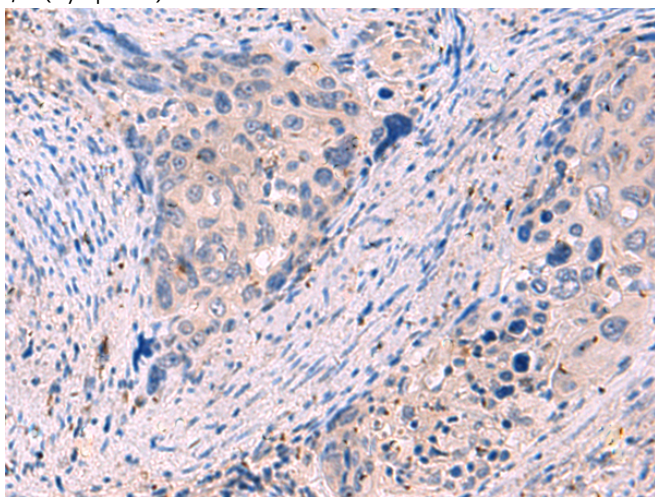
储存和运输: Store at -20°C. Avoid repeated freezing and thawing



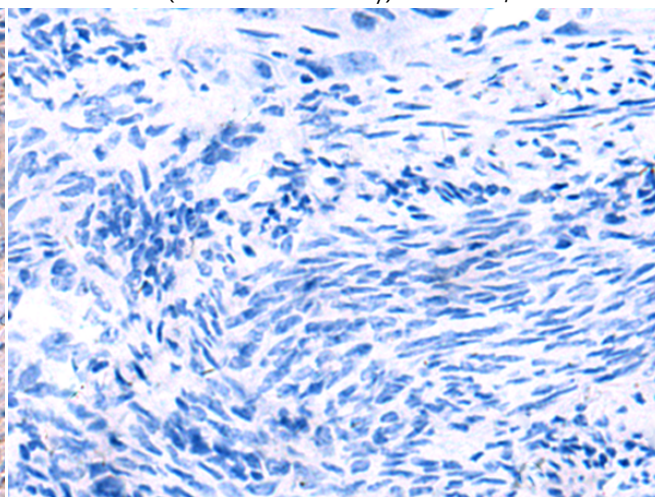
Immunohistochemistry analysis of paraffin embedded Human tonsil tissue using 222278(SLC12A7 Antibody) at a dilution of 1/35(Cytoplasm).



In comparison with the IHC on the left, the same paraffin-embedded Human tonsil tissue is first treated with the synthetic peptide and then with 222278(Anti-SLC12A7 Antibody) at dilution 1/35.



The image on the left is immunohistochemistry of paraffin-embedded Human cervical cancer tissue using 222278(Anti-SLC12A7 Antibody) at a dilution of 1/35.



In comparison with the IHC on the left, the same paraffin-embedded Human cervical cancer tissue is first treated with synthetic peptide and then with D264322(Anti-SLC12A7 Antibody) at dilution 1/35.



Product Description

Pioneering GTPase and Oncogene Product Development since 2010
