

## SLAMF8 RABBIT PAB

货号: S217211

产品全名: SLAMF8 兔多抗

基因符号: BLAME; CD353; SBBI42

**UNIPROT ID:** Q9P0V8 (Gene Accession - BC109194 )

**背景:** This gene encodes a member of the CD2 family of cell surface proteins involved in lymphocyte activation. These proteins are characterized by Ig domains. This protein is expressed in lymphoid tissues, and studies of a similar protein in mouse suggest that it may function during B cell lineage commitment. The gene is found in a region of chromosome 1 containing many CD2 genes.

**抗原:** Fusion protein of human SLAMF8

**经过测试的应用:** ELISA, IHC

**推荐稀释比:** IHC: 50-200; ELISA: 1000-5000

**种属反应性:** Rabbit

**克隆性:** Rabbit Polyclonal

**亚型:** Immunogen-specific rabbit IgG

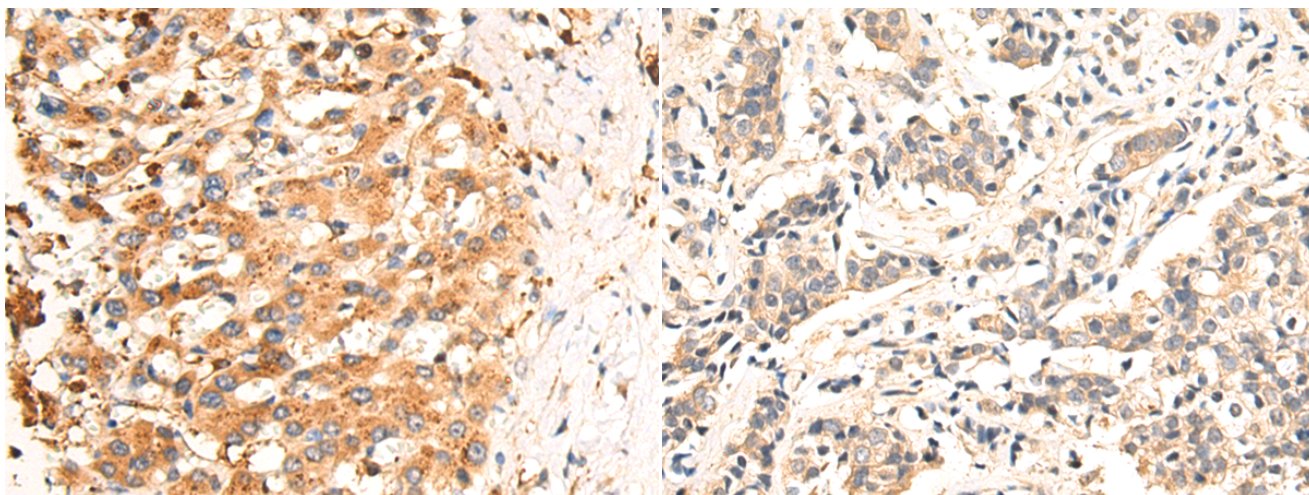
**纯化:** Antigen affinity purification

**种属反应性:** Human

**成分:** PBS (without Mg<sup>2+</sup> and Ca<sup>2+</sup>), pH 7.4, 150 mM NaCl, 0.05% Sodium Azide and 40% glycerol

**研究领域:** Immunology

**储存和运输:** Store at -20°C. Avoid repeated freezing and thawing



Immunohistochemistry analysis of paraffin-embedded Human liver cancer tissue using 217211(SLAMF8 Antibody) at a dilution of 1/50(Cytoplasm).

Immunohistochemistry analysis of paraffin-embedded Human breast cancer tissue using 217211(Anti-SLAMF8 Antibody) at a dilution of 1/50.