

SKP1 RABBIT MAB

货号: N262903

产品全名: SKP1 兔单克隆抗体

基因符号 SKP1; EMC19; OCP2; SKP1A; TCEB1L; S-phase kinase-associated protein 1; Cyclin-A/CDK2-associated protein p19; Organ of Corti protein 2; OCP-2; Organ of Corti protein II; OCP-II; RNA polymerase II elongation factor-like protein; SIII; Transcr

UNIPROT ID: P63208

背景: Essential component of the SCF (SKP1-CUL1-F-box protein) ubiquitin ligase complex, which mediates the ubiquitination of proteins involved in cell cycle progression, signal transduction and transcription.

抗原: A synthetic peptide of human Skp1

经过测试的应用: WB, ICC/IF

推荐稀释比: WB: 1/500-1/1000 IF: 1/50-1/200

种属反应性: Rabbit

克隆性: Rabbit Monoclonal

克隆编号: R01-6H2

分子量: Calculated MW: 19 kDa; Observed MW: 19 kDa

亚型: IgG

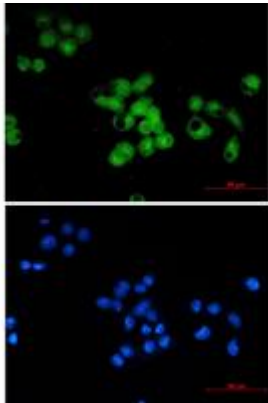
纯化: Affinity Purified

种属反应性: Human, Mouse and Rat

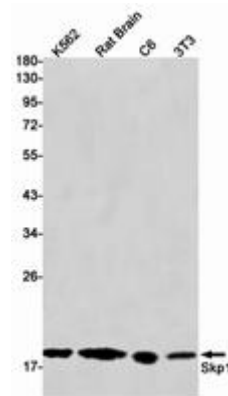
成分: PBS (without Mg²⁺ and Ca²⁺), pH 7.3 containing 50% glycerol, 0.5% BSA and 0.02% sodium azide

研究领域: Cell Biology

储存和运输: Store at -20°C. Avoid repeated freezing and thawing



Immunocytochemistry analysis of Skp1 (green) in MCF-7 using Skp1 antibody, and DAPI (blue)



Western blot analysis of Skp1 in K562, rat Brain, C6, 3T3 lysates using SKP1 antibody.