

## SKI RABBIT PAB

货号: S219720

产品全名: SKI 兔多抗

基因符号: SGS; SKV

**UNIPROT ID:** P12755 (Gene Accession - NP\_003027)

**背景:** This gene encodes the nuclear protooncogene protein homolog of avian sarcoma viral (v-ski) oncogene. It functions as a repressor of TGF-beta signaling, and may play a role in neural tube development and muscle differentiation.

**抗原:** Synthetic peptide of human SKI

**经过测试的应用:** ELISA, WB, IHC

**推荐稀释比:** IHC: 50-200;WB: 500-2000;ELISA: 5000-10000

**种属反应性:** Rabbit

**克隆性:** Rabbit Polyclonal

**亚型:** Immunogen-specific rabbit IgG

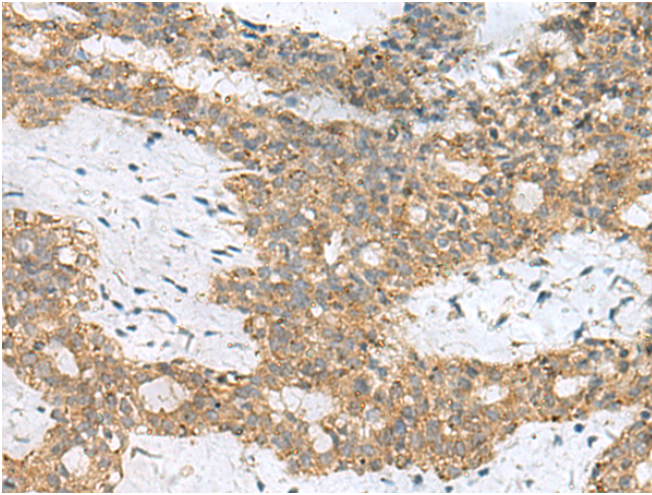
**纯化:** Antigen affinity purification

**种属反应性:** Human, Mouse

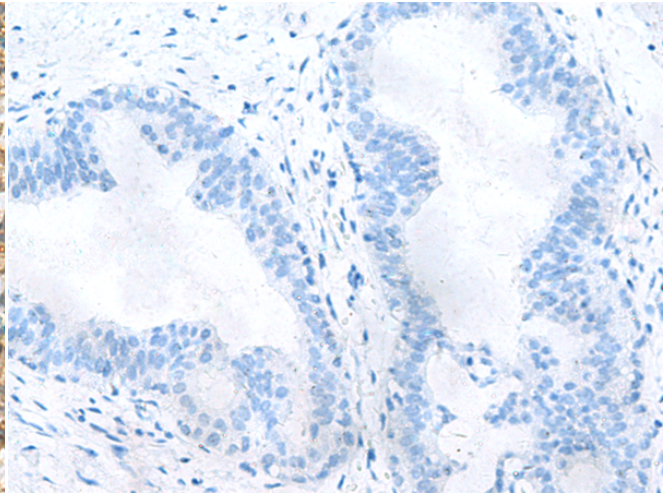
**成分:** PBS (without Mg<sup>2+</sup> and Ca<sup>2+</sup>), pH 7.4, 150 mM NaCl, 0.05% Sodium Azide and 40% glycerol

**研究领域:** Epigenetics and Nuclear Signaling, Cancer

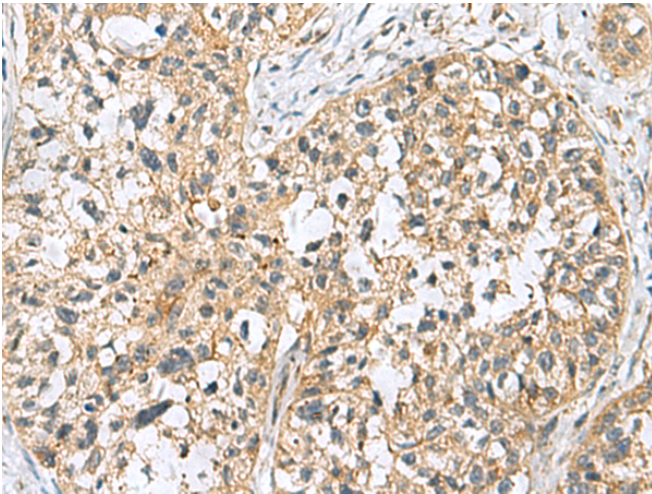
**储存和运输:** Store at -20°C. Avoid repeated freezing and thawing



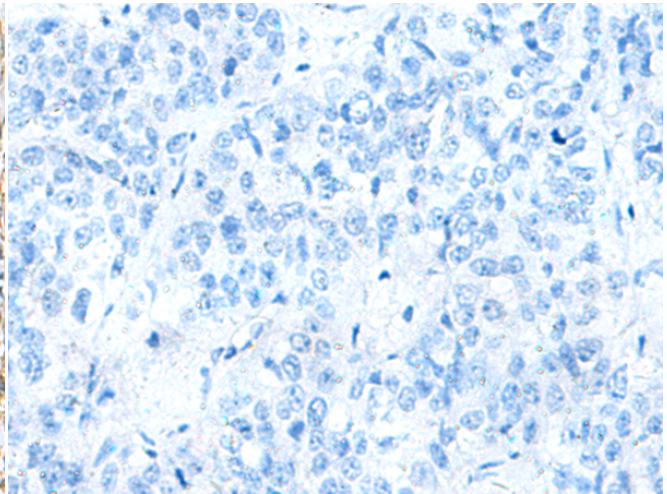
Immunohistochemistry analysis of paraffin embedded Human breast cancer tissue using 219720 (SKI Antibody) at a dilution of 1/70 (Cytoplasm).



In comparison with the IHC on the left, the same paraffin-embedded Human breast cancer tissue is first treated with the synthetic peptide and then with 219720 (Anti-SKI Antibody) at dilution 1/70.

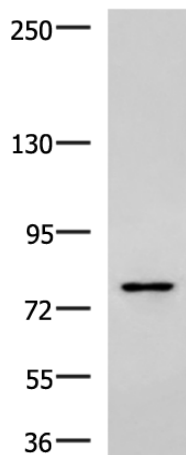


The image on the left is immunohistochemistry of paraffin-embedded Human esophagus cancer tissue using 219720 (Anti-SKI Antibody) at a dilution of 1/70.



In comparison with the IHC on the left, the same paraffin-embedded Human esophagus cancer tissue is first treated with synthetic peptide and then with D260210 (Anti-SKI Antibody) at dilution 1/70.

kDa



Gel: 6% SDS-PAGE, Lysate: 40 µg;  
 Lane: Raji cell lysate;  
 Primary antibody: 219720 (SKI Antibody) at dilution 1/800;  
 Secondary antibody: HRP-conjugated Goat anti rabbit IgG at 1/5000 dilution;  
 Exposure time: 30 seconds



# Product Description

Pioneering GTPase and Oncogene Product Development since 2010

---