

## SIX6 RABBIT PAB

货号: S222195

产品全名: SIX6 兔多抗

基因符号: Six9; ODRMD; OPTX2; MCOPCT2

**UNIPROT ID:** O95475 (Gene Accession - NP\_031400)

**背景:** The protein encoded by this gene is a homeobox protein that is similar to the Drosophila 'sine oculis' gene product. This gene is found in a cluster of related genes on chromosome 14 and is thought to be involved in eye development. Defects in this gene are a cause of isolated microphthalmia with cataract type 2 (MCOPCT2).

**抗原:** Synthetic peptide of human SIX6

**经过测试的应用:** ELISA, IHC

**推荐稀释比:** IHC: 50-300; ELISA: 5000-10000

**种属反应性:** Rabbit

**克隆性:** Rabbit Polyclonal

**亚型:** Immunogen-specific rabbit IgG

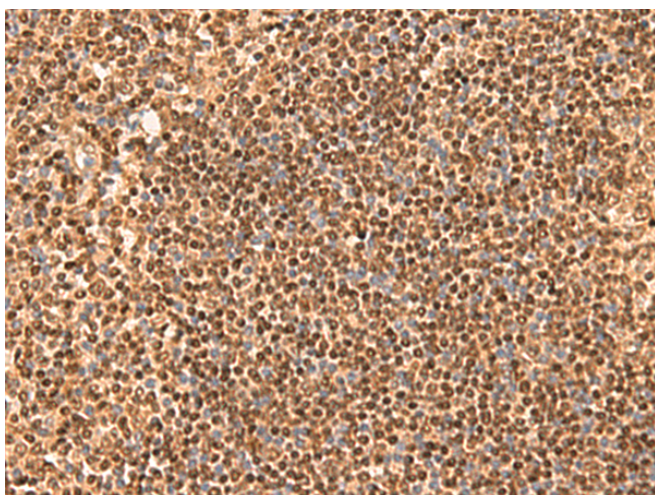
**纯化:** Antigen affinity purification

**种属反应性:** Human, Mouse

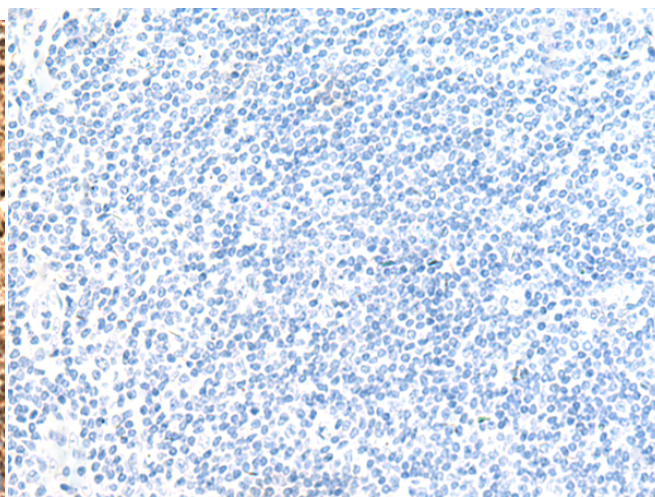
**成分:** PBS (without Mg<sup>2+</sup> and Ca<sup>2+</sup>), pH 7.4, 150 mM NaCl, 0.05% Sodium Azide and 40% glycerol

**研究领域:** Epigenetics and Nuclear Signaling, Neuroscience

**储存和运输:** Store at -20°C. Avoid repeated freezing and thawing



Immunohistochemistry analysis of paraffin embedded Human tonsil tissue using 222195(SIX6 Antibody) at a dilution of 1/50(Nucleus).



In comparison with the IHC on the left, the same paraffin-embedded Human tonsil tissue is first treated with the synthetic peptide and then with 222195(Anti-SIX6 Antibody) at dilution 1/50.