

## SIRP ALPHA RABBIT MAB

货号: N263548

产品全名: SIRP alpha 兔单克隆抗体

基因符号 SIRPA; BIT; MFR; MYDI; PTPNS1; SHPS1; SIRP; Tyrosine-protein phosphatase non-receptor type substrate 1; SHP substrate 1; SHPS-1; Brain Ig-like molecule with tyrosine-based activation motifs; Bit; CD172 antigen-like family member A; Inhibito

**UNIPROT ID:** P78324

背景: Immunoglobulin-like cell surface receptor for CD47. Acts as docking protein and induces translocation of PTPN6, PTPN11 and other binding partners from the cytosol to the plasma membrane. Supports adhesion of cerebellar neurons, neurite outgrowth and glial cell attachment.

抗原: Recombinant protein of human SIRP alpha

经过测试的应用: WB, ICC/IF

推荐稀释比: WB: 1/500-1/1000 IF: 1/50-1/200

种属反应性: Rabbit

克隆性: Rabbit Monoclonal

克隆编号: R08-1G4

分子量: Calculated MW: 55 kDa; Observed MW: 85 kDa

亚型: IgG

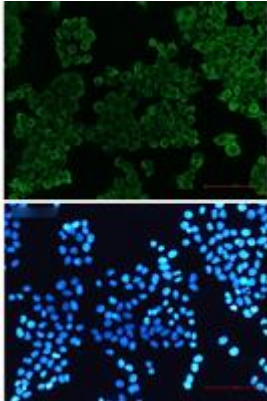
纯化: Affinity Purified

种属反应性: Human

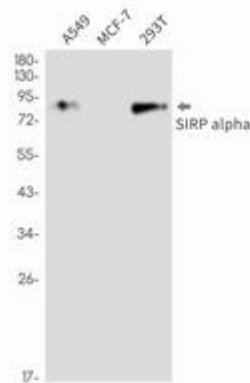
成分: PBS (without Mg<sup>2+</sup> and Ca<sup>2+</sup>), pH 7.3 containing 50% glycerol, 0.5% BSA and 0.02% sodium azide

研究领域: Neuroscience

储存和运输: Store at -20°C. Avoid repeated freezing and thawing



Immunocytochemistry analysis of SIRP alpha (green) in HeLa using SIRP alpha antibody, and DAPI (blue)



Western blot analysis of SIRP alpha in A549, MCF-7, 293T lysates using SIRP alpha antibody.