

SIPA1 RABBIT PAB

货号: S220208

产品全名: SIPA1 兔多抗

基因符号: SPA1

UNIPROT ID: Q96FS4 (Gene Accession - NP_006738.3)

背景: The product of this gene is a mitogen induced GTPase activating protein (GAP). It exhibits a specific GAP activity for Ras-related regulatory proteins Rap1 and Rap2, but not for Ran or other small GTPases. This protein may also hamper mitogen-induced cell cycle progression when abnormally or prematurely expressed. It is localized to the perinuclear region. Two alternatively spliced variants encoding the same isoform have been characterized to date.

抗原: Synthetic peptide of human SIPA1

经过测试的应用: ELISA, IHC

推荐稀释比: IHC: 50-200; ELISA: 2000-5000

种属反应性: Rabbit

克隆性: Rabbit Polyclonal

亚型: Immunogen-specific rabbit IgG

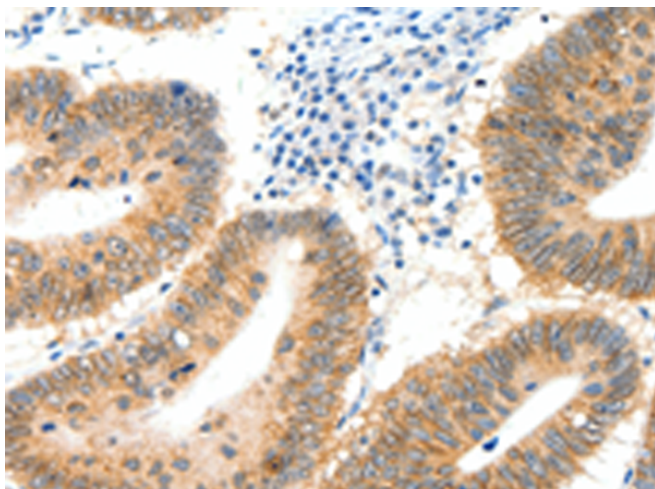
纯化: Antigen affinity purification

种属反应性: Human

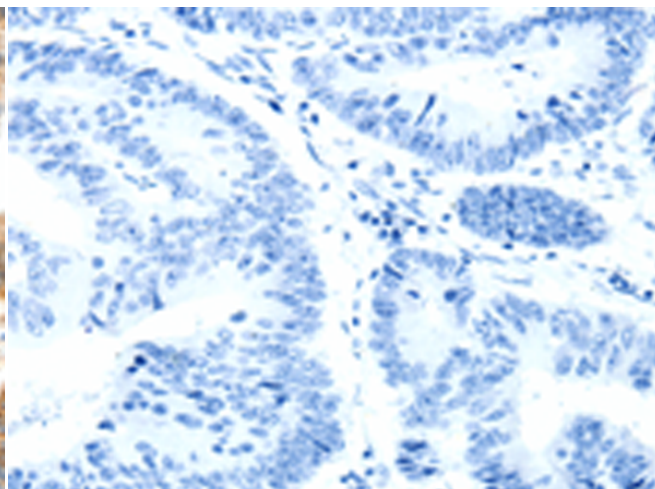
成分: PBS (without Mg²⁺ and Ca²⁺), pH 7.4, 150 mM NaCl, 0.05% Sodium Azide and 40% glycerol

研究领域: Signal Transduction, Epigenetics and Nuclear Signaling, Cancer, Stem Cells, Developmental Biology

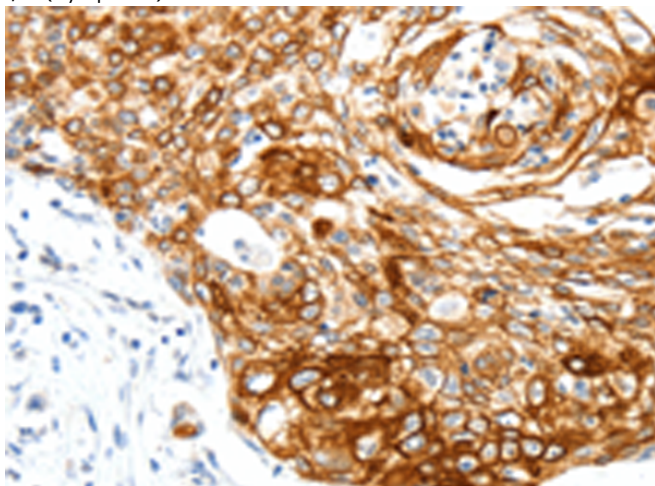
储存和运输: Store at -20°C. Avoid repeated freezing and thawing



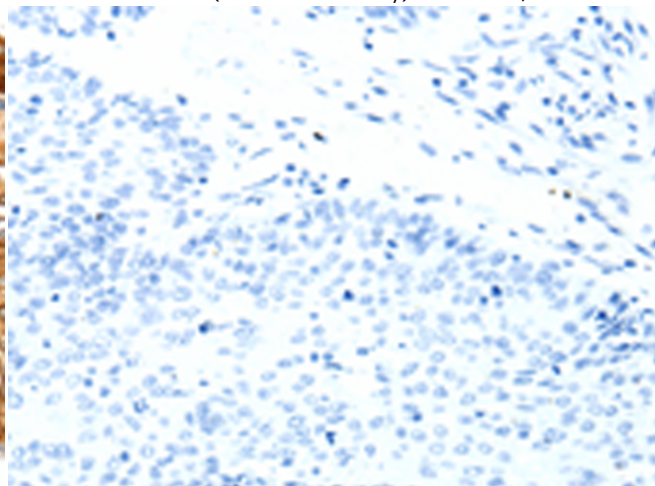
Immunohistochemistry analysis of paraffin embedded Human colon cancer tissue using 220208(SIPA1 Antibody) at a dilution of 1/40(Cytoplasm).



In comparison with the IHC on the left, the same paraffin-embedded Human colon cancer tissue is first treated with the synthetic peptide and then with 220208(Anti-SIPA1 Antibody) at dilution 1/40.



The image on the left is immunohistochemistry of paraffin-embedded Human cervical cancer tissue using 220208(Anti-SIPA1 Antibody) at a dilution of 1/40.



In comparison with the IHC on the left, the same paraffin-embedded Human cervical cancer tissue is first treated with synthetic peptide and then with D261140(Anti-SIPA1 Antibody) at dilution 1/40.



Product Description

Pioneering GTPase and Oncogene Product Development since 2010
