

## SIMC1 RABBIT PAB

货号: S219557

产品全名: SIMC1 兔多抗

基因符号: OOMA1; PLEIAD; C5orf25

**UNIPROT ID:** Q8NDZ2 (Gene Accession - BC032390)

背景: SIMC1 (SUMO Interacting Motifs Containing 1) is a Protein Coding gene. Gene Ontology (GO) annotations related to this gene include SUMO polymer binding. An important paralog of this gene is SKIDA1.

抗原: Fusion protein of human SIMC1

经过测试的应用: ELISA, IHC

推荐稀释比: IHC: 50-100; ELISA: 5000-10000

种属反应性: Rabbit

克隆性: Rabbit Polyclonal

亚型: Immunogen-specific rabbit IgG

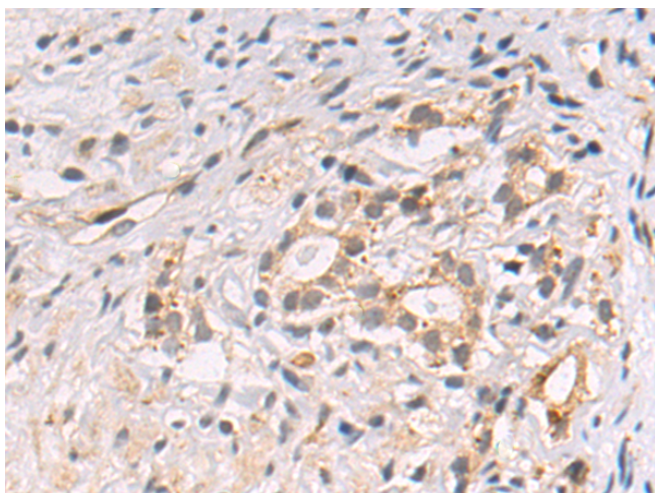
纯化: Antigen affinity purification

种属反应性: Human

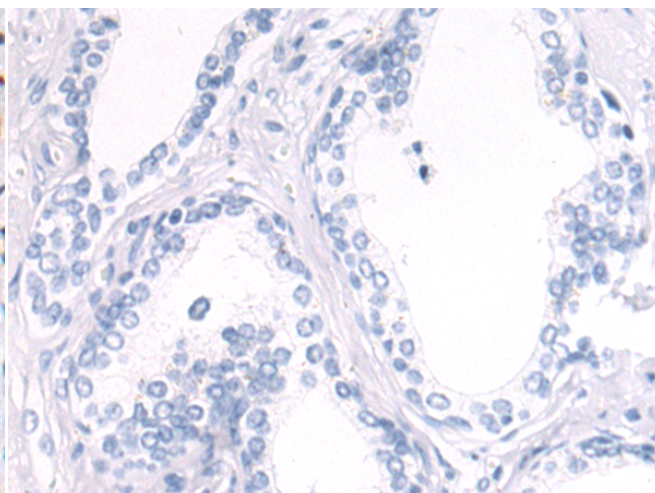
成分: PBS (without Mg<sup>2+</sup> and Ca<sup>2+</sup>), pH 7.4, 150 mM NaCl, 0.05% Sodium Azide and 40% glycerol

研究领域: Cell Biology, Signal Transduction

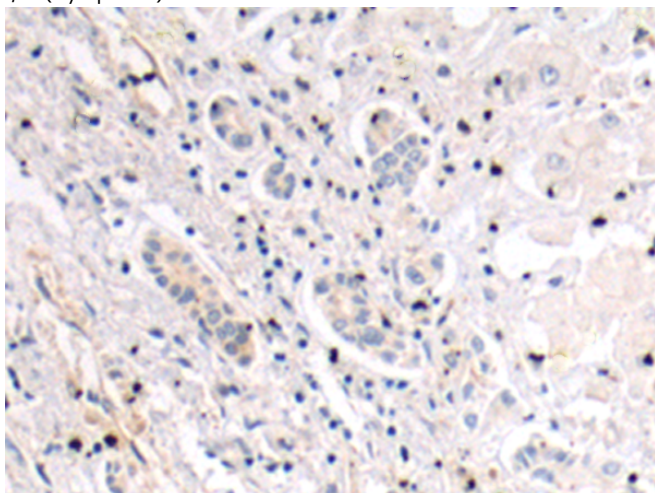
储存和运输: Store at -20°C. Avoid repeated freezing and thawing



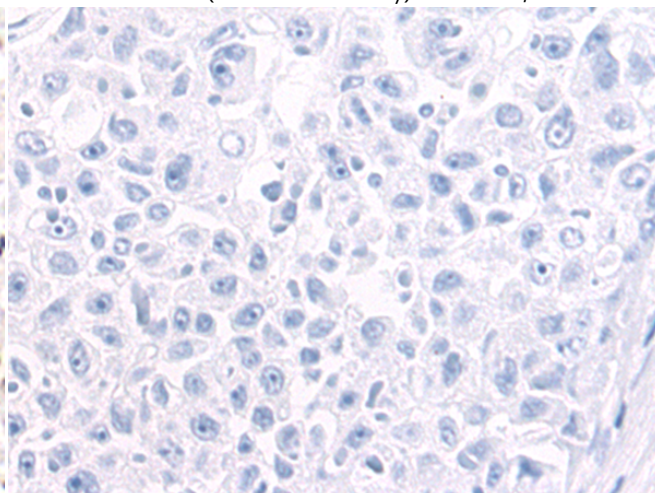
Immunohistochemistry analysis of paraffin embedded Human prostate cancer tissue using 219557(SIMC1 Antibody) at a dilution of 1/50(Cytoplasm).



In comparison with the IHC on the left, the same paraffin-embedded Human prostate cancer tissue is first treated with the fusion protein and then with 219557(Anti-SIMC1 Antibody) at dilution 1/50.



The image on the left is immunohistochemistry of paraffin-embedded Human liver cancer tissue using 219557(Anti-SIMC1 Antibody) at a dilution of 1/50.



In comparison with the IHC on the left, the same paraffin-embedded Human liver cancer tissue is first treated with fusion protein and then with D227723(Anti-SIMC1 Antibody) at dilution 1/50.



# Product Description

Pioneering GTPase and Oncogene Product Development since 2010

---