

SIGLEC7 RABBIT PAB

货号: N225031

产品全名: SIGLEC7 兔多抗

基因符号 SIGLEC7; AIRM1; Sialic acid-binding Ig-like lectin 7; Siglec-7; Adhesion inhibitory receptor molecule 1; AIRM-1; CDw328; D-siglec; QA79 membrane protein; p75; CD328

UNIPROT ID: Q9Y286

背景: Sialic acid-binding Ig-like lectin 7 is a protein that in humans is encoded by the SIGLEC7 gene. SIGLEC7 has also been designated as CD328 (cluster of differentiation 328). Putative adhesion molecule that mediates sialic-acid dependent binding to cells. Preferentially binds to alpha-2,3- and alpha-2,6-linked sialic acid. Also binds disialogangliosides (disialogalactosyl globoside, disialyl lactotetraosylceramide and disialyl GalNAc lactotetraosylceramide). The sialic acid recognition site may be masked by cis interactions with sialic acids on the same cell surface.

抗原: The antiserum was produced against synthesized peptide derived from the Internal region of human SIGLEC7. AA range:51-100

经过测试的应用: WB,IHC-P,ELISA

推荐稀释比: WB: 1/500-1/1000 IHC: 1/50-1/100 ELISA: 1/10000

种属反应性: Rabbit

克隆性: Rabbit Polyclonal

分子量: Calculated MW: 51 kDa; Observed MW: 51 kDa

亚型: IgG

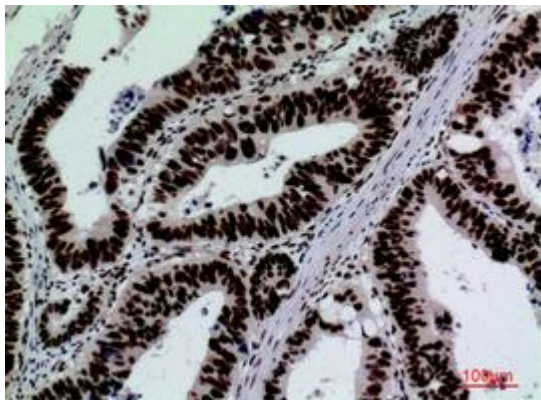
纯化: Affinity Purified

种属反应性: Human

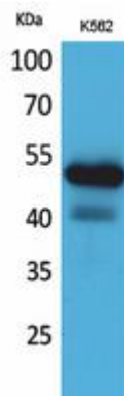
成分: PBS (without Mg²⁺ and Ca²⁺), pH 7.3 containing 50% glycerol, 0.5% BSA and 0.02% sodium azide

研究领域: Cardiovascular

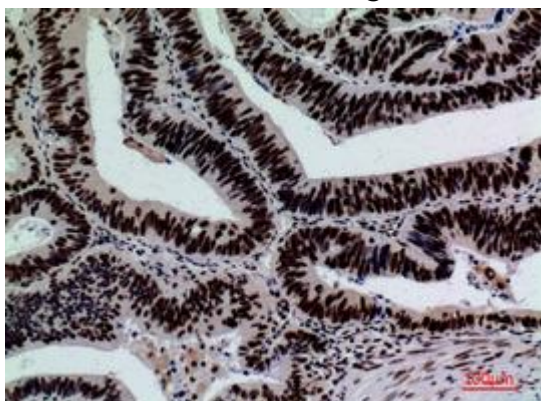
储存和运输: Store at -20°C. Avoid repeated freezing and thawing



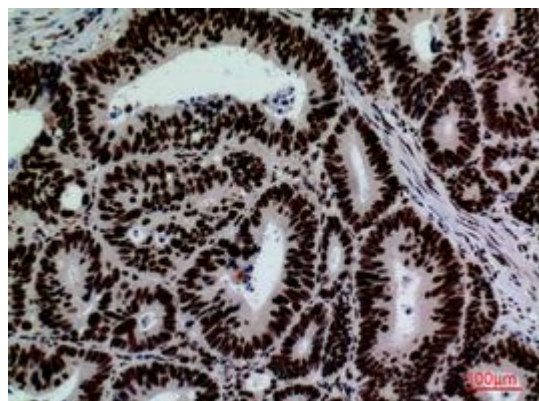
Immunohistochemistry analysis of paraffin-embedded Human coloncancer using SIGLEC7 antibody. High-pressure and temperature Sodium Citrate pH 6.0 was used for antigen retrieval.



Western blot analysis of SIGLEC7 in K562 lysates using SIGLEC7 antibody.



Immunohistochemistry analysis of paraffin-embedded Human coloncancer using SIGLEC7 antibody. High-pressure and temperature Sodium Citrate pH 6.0 was used for antigen retrieval.



Immunohistochemistry analysis of paraffin-embedded Human coloncancer using SIGLEC7 antibody. High-pressure and temperature Sodium Citrate pH 6.0 was used for antigen retrieval.