

SIGLEC7 RABBIT PAB

货号: S220908

产品全名: SIGLEC7 兔多抗

基因符号 p75; QA79; AIRM1; CD328; CDw328; D-siglec; SIGLEC-7; SIGLECP2; SIGLEC19P; p75/AIRM1

UNIPROT ID: Q9Y286 (Gene Accession - NP_055200)

背景: Siglec-7, which is highly expressed in monocytes and resident blood cells but not in parenchymatous cells, mediates inhibition of natural killer cell cytotoxicity. Due to alternative splicing events, two isoforms exist for Siglec-12, namely SLG-L (the long isoform) and SLG-S (the shorter isoform). These isoforms are differentially expressed with the longer isoform predominantly found in small intestine, spleen and bone marrow, and the shorter isoform predominantly found in small intestine, spleen and adrenal gland.

抗原: Synthetic peptide of human SIGLEC7

经过测试的应用: ELISA, IHC

推荐稀释比: IHC: 25-100; ELISA: 1000-2000

种属反应性: Rabbit

克隆性: Rabbit Polyclonal

亚型: Immunogen-specific rabbit IgG

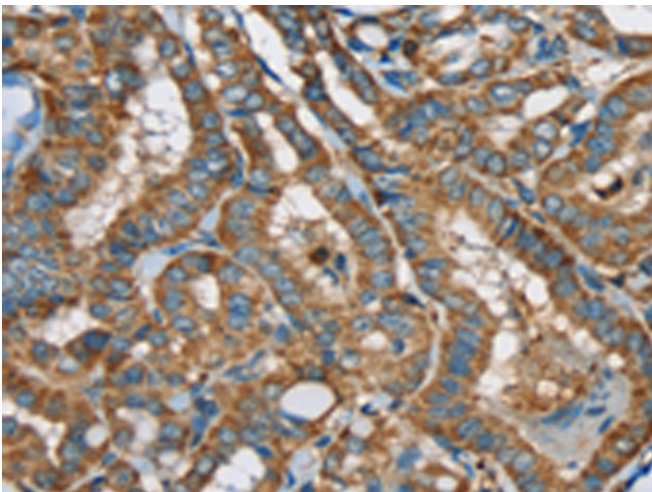
纯化: Antigen affinity purification

种属反应性: Human

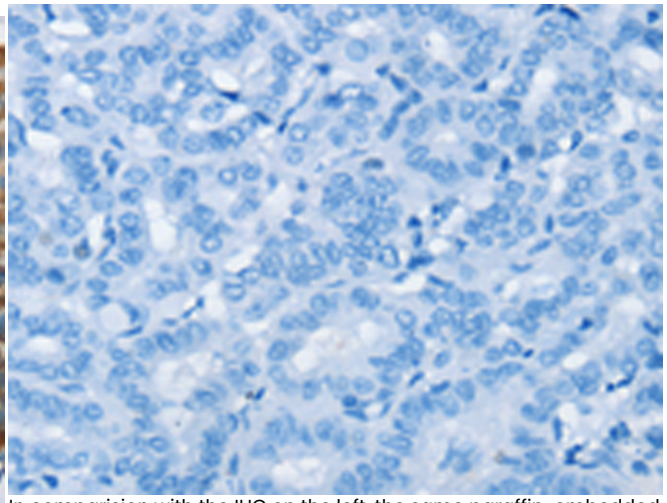
成分: PBS (without Mg²⁺ and Ca²⁺), pH 7.4, 150 mM NaCl, 0.05% Sodium Azide and 40% glycerol

研究领域: Neuroscience, Cardiovascular, Immunology, Stem Cells

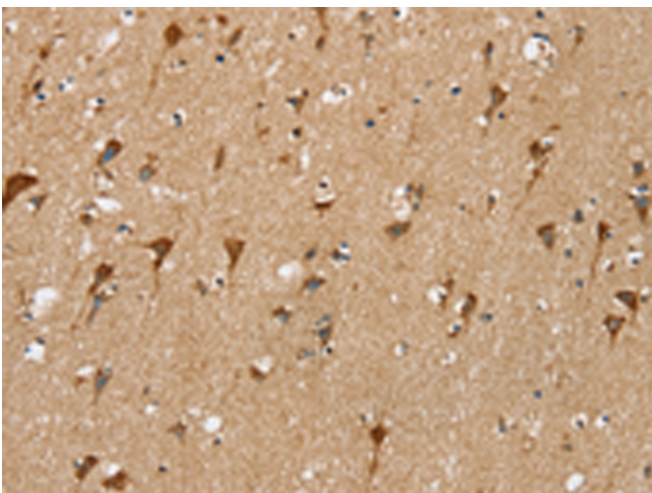
储存和运输: Store at -20°C. Avoid repeated freezing and thawing



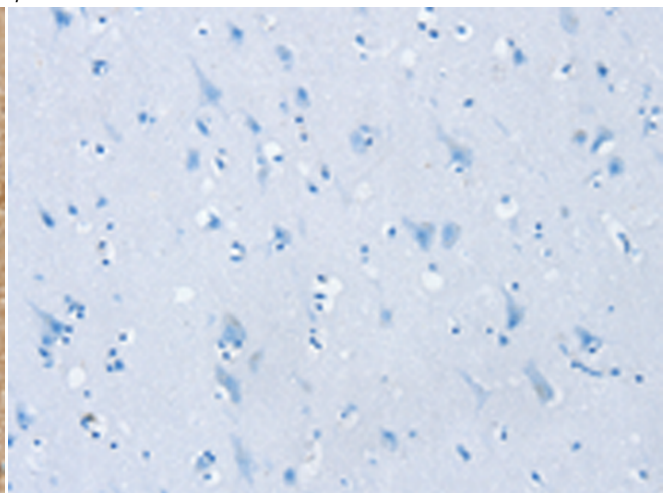
Immunohistochemistry analysis of paraffin embedded Human thyroid cancer tissue using 220908(SIGLEC7 Antibody) at a dilution of 1/35(Cytoplasm or Cell membrane).



In comparison with the IHC on the left, the same paraffin-embedded Human thyroid cancer tissue is first treated with the synthetic peptide and then with 220908(Anti-SIGLEC7 Antibody) at dilution 1/35.



The image on the left is immunohistochemistry of paraffin-embedded Human brain tissue using 220908(Anti-SIGLEC7 Antibody) at a dilution of 1/35.



In comparison with the IHC on the left, the same paraffin-embedded Human brain tissue is first treated with synthetic peptide and then with D262201(Anti-SIGLEC7 Antibody) at dilution 1/35.



Product Description

Pioneering GTPase and Oncogene Product Development since 2010
