

SIGLEC6 RABBIT PAB

货号: S220437

产品全名: SIGLEC6 兔多抗

基因符号: CD327; CD33L; OBBP1; CD33L1; CD33L2; CDW327

UNIPROT ID: O43699 (Gene Accession - NP_001171018)

背景: This gene encodes a member of the SIGLEC (sialic acid binding immunoglobulin-like lectin) family of proteins. The encoded transmembrane receptor binds sialyl-TN glycans and leptin. Placental expression of the encoded protein is upregulated in preeclampsia.

抗原: Synthetic peptide of human SIGLEC6

经过测试的应用: ELISA, WB, IHC

推荐稀释比: IHC: 50-300; WB: 500-2000; ELISA: 5000-10000

种属反应性: Rabbit

克隆性: Rabbit Polyclonal

亚型: Immunogen-specific rabbit IgG

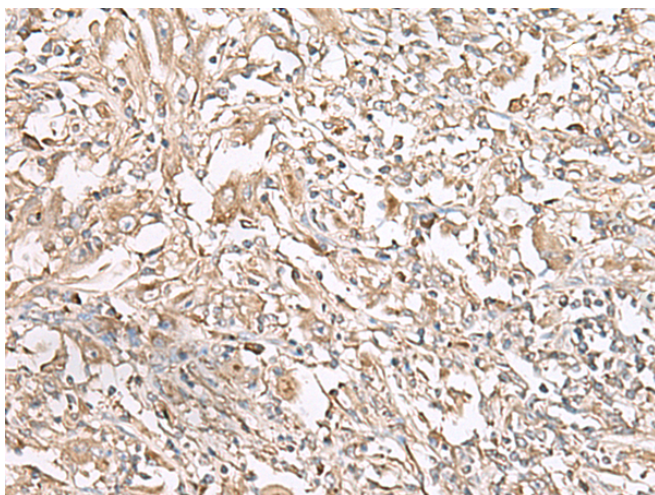
纯化: Antigen affinity purification

种属反应性: Human

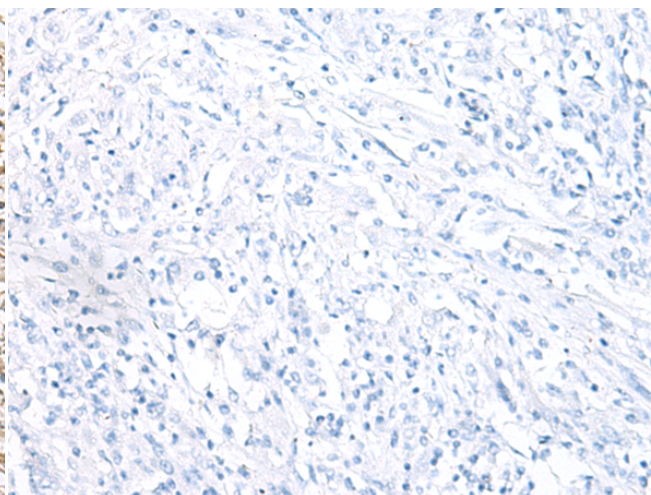
成分: PBS (without Mg²⁺ and Ca²⁺), pH 7.4, 150 mM NaCl, 0.05% Sodium Azide and 40% glycerol

研究领域: Immunology

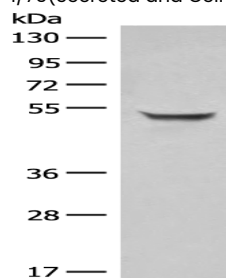
储存和运输: Store at -20°C. Avoid repeated freezing and thawing



Immunohistochemistry analysis of paraffin embedded Human liver cancer tissue using 220437 (SIGLEC6 Antibody) at a dilution of 1/75 (Secreted and Cell membrane).



In comparison with the IHC on the left, the same paraffin-embedded Human liver cancer tissue is first treated with the synthetic peptide and then with 220437 (Anti-SIGLEC6 Antibody) at dilution 1/75.



Gel: 8% SDS-PAGE, Lysate: 40 µg;

Lane: Human plasma solution;

Primary antibody: 220437 (SIGLEC6 Antibody) at dilution 1/200;

Secondary antibody: Goat anti rabbit IgG at 1/8000 dilution;

Exposure time: 40 seconds