

SIGLEC14 RABBIT PAB

货号: S220911

产品全名: SIGLEC14 兔多抗

基因符号

UNIPROT ID: Q08ET2 (Gene Accession - NP_001092082)

背景: Putative adhesion molecule. Sialic acid-binding paired receptor which may activate associated receptors. Interacts with TYROBP.

Mainly expressed in hematopoietic tissues including bone marrow, spleen and fetal liver. Siglec-14 is predominantly expressed in hematopoietic tissues but is also found in lung and testis.

抗原: Synthetic peptide of human SIGLEC14

经过测试的应用: ELISA, IHC

推荐稀释比: IHC: 25-100; ELISA: 1000-2000

种属反应性: Rabbit

克隆性: Rabbit Polyclonal

亚型: Immunogen-specific rabbit IgG

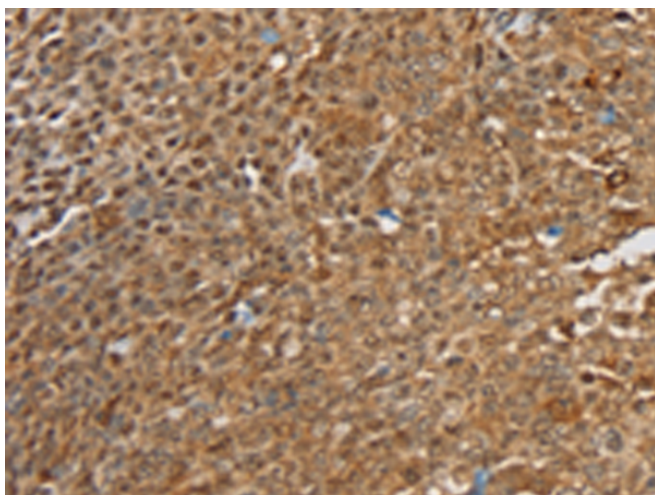
纯化: Antigen affinity purification

种属反应性: Human

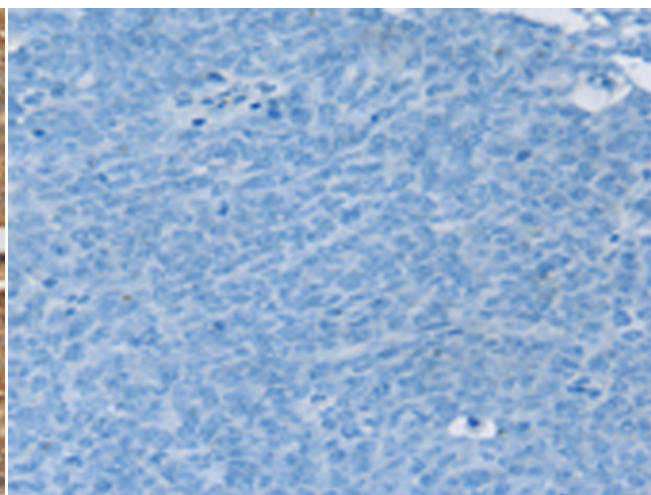
成分: PBS (without Mg²⁺ and Ca²⁺), pH 7.4, 150 mM NaCl, 0.05% Sodium Azide and 40% glycerol

研究领域: Cell Biology

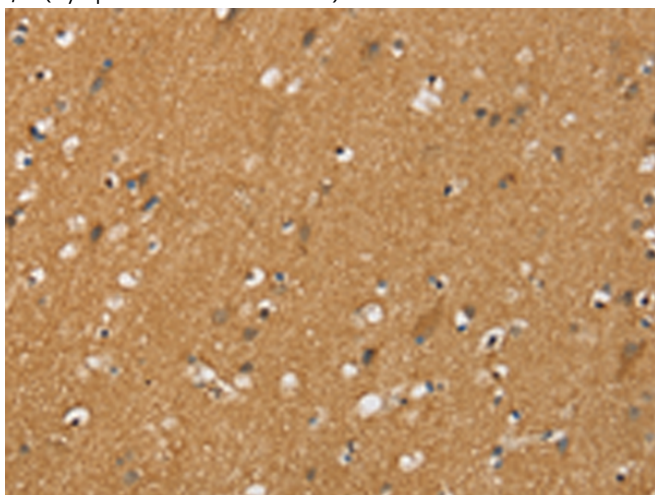
储存和运输: Store at -20°C. Avoid repeated freezing and thawing



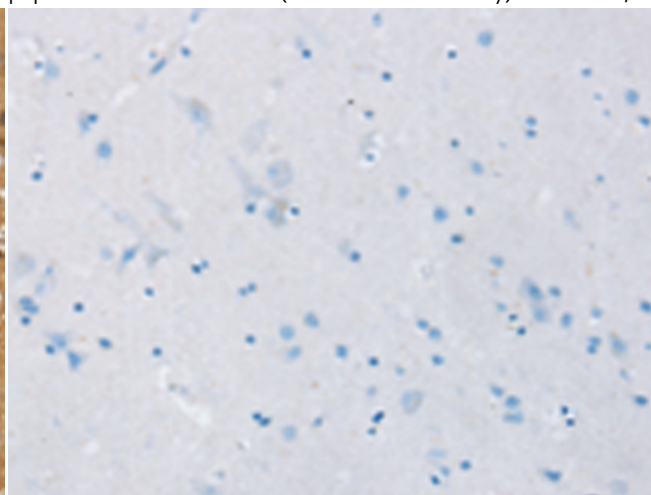
Immunohistochemistry analysis of paraffin embedded Human ovarian cancer tissue using 220911(SIGLEC14 Antibody) at a dilution of 1/30(Cytoplasm or Cell membrane).



In comparison with the IHC on the left, the same paraffin-embedded Human ovarian cancer tissue is first treated with the synthetic peptide and then with 220911(Anti-SIGLEC14 Antibody) at dilution 1/30.



The image on the left is immunohistochemistry of paraffin-embedded Human brain tissue using 220911(Anti-SIGLEC14 Antibody) at a dilution of 1/30.



In comparison with the IHC on the left, the same paraffin-embedded Human brain tissue is first treated with synthetic peptide and then with 220911(Anti-SIGLEC14 Antibody) at dilution 1/30.



Product Description

Pioneering GTPase and Oncogene Product Development since 2010
