

SIAH1 RABBIT PAB

货号: S217815

产品全名: SIAH1 兔多抗

基因符号: SIAH1A

UNIPROT ID: Q8IUQ4 (Gene Accession - BC035562)

背景: This gene encodes a protein that is a member of the seven in absentia homolog (SIAH) family. The protein is an E3 ligase and is involved in ubiquitination and proteasome-mediated degradation of specific proteins. The activity of this ubiquitin ligase has been implicated in the development of certain forms of Parkinson's disease, the regulation of the cellular response to hypoxia and induction of apoptosis. Alternative splicing results in several additional transcript variants, some encoding different isoforms and others that have not been fully characterized.

抗原: Fusion protein of human SIAH1

经过测试的应用: ELISA, WB, IHC

推荐稀释比: IHC: 200-400;WB: 500-2000;ELISA: 5000-10000

种属反应性: Rabbit

克隆性: Rabbit Polyclonal

亚型: Immunogen-specific rabbit IgG

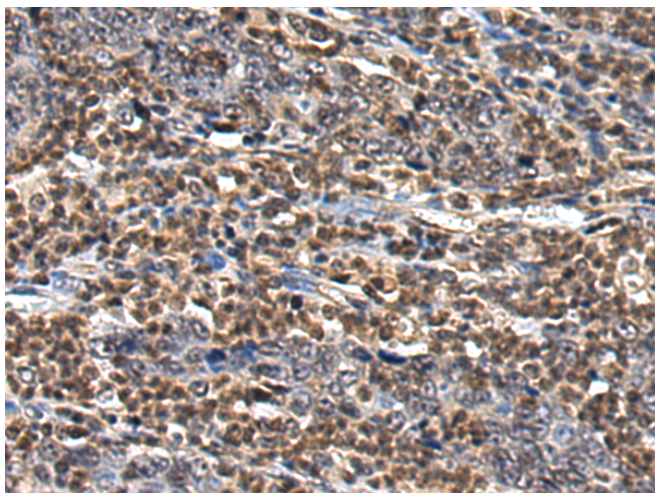
纯化: Antigen affinity purification

种属反应性: Human, Mouse, Rat

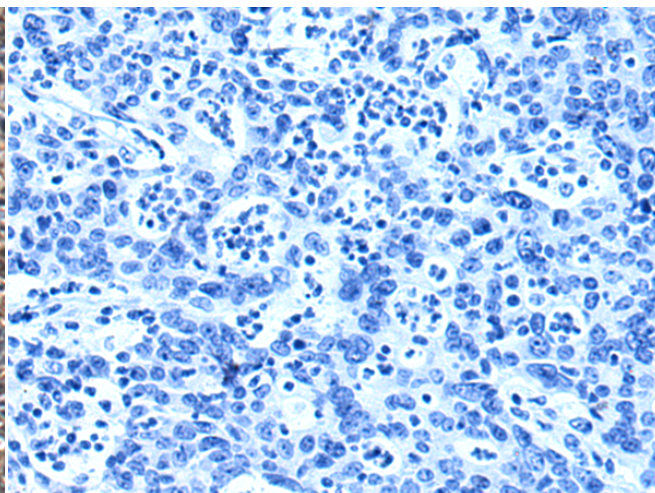
成分: PBS (without Mg²⁺ and Ca²⁺), pH 7.4, 150 mM NaCl, 0.05% Sodium Azide and 40% glycerol

研究领域: Cell Biology, Neuroscience

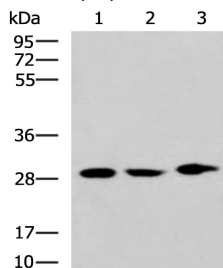
储存和运输: Store at -20°C. Avoid repeated freezing and thawing



Immunohistochemistry analysis of paraffin embedded Human gastric cancer tissue using 217815(SIAH1 Antibody) at a dilution of 1/200(Cytoplasm and Nucleus).



In comparison with the IHC on the left, the same paraffin-embedded Human gastric cancer tissue is first treated with the fusion protein and then with 217815(Anti-SIAH1 Antibody) at dilution 1/200.



Gel: 8%SDS-PAGE, Lysate: 40 µg;

Lane 1-3: LO2 cell, Mouse liver tissue, Mouse kidney tissue lysates;

Primary antibody: 217815(SIAH1 Antibody) at dilution 1/600;

Secondary antibody: HRP-conjugated Goat anti rabbit IgG at 1/5000 dilution;

Exposure time: 70 seconds