

SHP1 (2B7) MOUSE MAB

货号: N261151

产品全名: SHP1 (2B7) 小鼠单抗

基因符号 PTPN6; HCP; PTP1C; Tyrosine-protein phosphatase non-receptor type 6; Hematopoietic cell protein-tyrosine phosphatase; Protein-tyrosine phosphatase 1C; PTP-1C; Protein-tyrosine phosphatase SHP-1; SH-PTP1

UNIPROT ID: P29350

背景: The protein encoded by this gene is a member of the protein tyrosine phosphatase (PTP) family. PTPs are known to be signaling molecules that regulate a variety of cellular processes including cell growth, differentiation, mitotic cycle, and oncogenic transformation.

抗原: Purified recombinant human SHP-1 protein fragments expressed in E.coli.

经过测试的应用: WB,IP

推荐稀释比: WB: 1/500-1/1000 IP: 1/20

种属反应性: Mouse

克隆性: Mouse Monoclonal

克隆编号: 2B7-H7-F8

分子量: Calculated MW: 68 kDa; Observed MW: 68 kDa

亚型: IgG2a

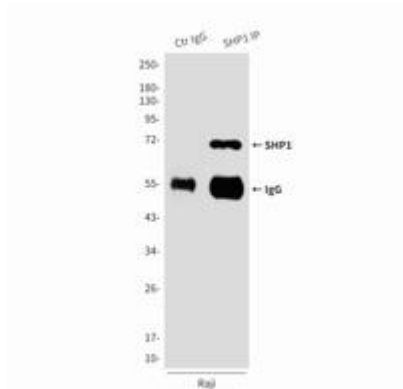
纯化: Affinity Purified

种属反应性: Human

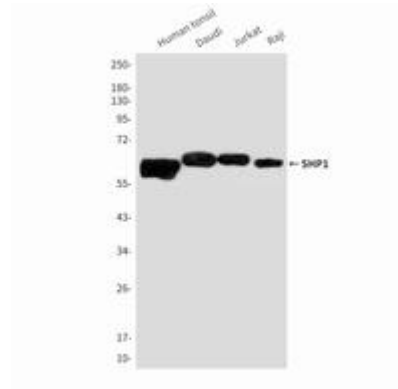
成分: PBS (without Mg²⁺ and Ca²⁺), pH 7.3 containing 50% glycerol, 0.5% BSA and 0.02% sodium azide

研究领域: Cell Biology

储存和运输: Store at -20°C. Avoid repeated freezing and thawing



Immunoprecipitation analysis of SHP1 (2B7) in Raji lysates using SHP1 antibody.



Western blot analysis of SHP1 in Human tonsil, Daudi, Jurkat and Raji lysates using SHP1 antibody.