

SHCBP1 RABBIT PAB

货号: S219516

产品全名: SHCBP1 兔多抗

基因符号: PAL

UNIPROT ID: Q8NEM2 (Gene Accession - BC030699)

背景: May play a role in signaling pathways governing cellular proliferation, cell growth and differentiation. May be a component of a novel signaling pathway downstream of Shc. Acts as a positive regulator of FGF signaling in neural progenitor cells.

抗原: Fusion protein of human SHCBP1

经过测试的应用: ELISA, WB, IHC

推荐稀释比: IHC: 50-200; WB: 500-2000; ELISA: 5000-10000

种属反应性: Rabbit

克隆性: Rabbit Polyclonal

亚型: Immunogen-specific rabbit IgG

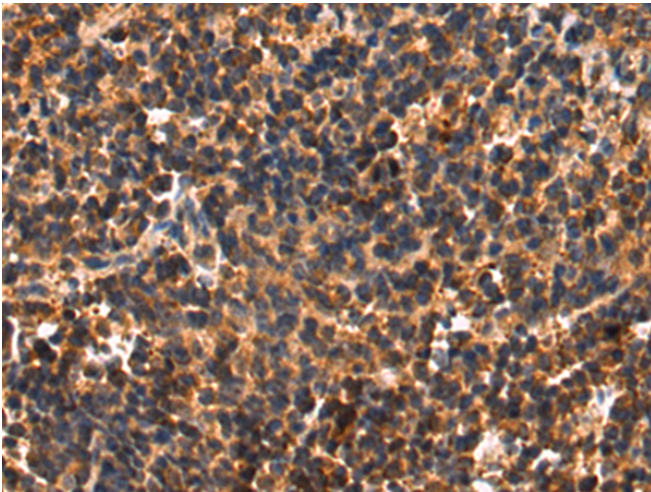
纯化: Antigen affinity purification

种属反应性: Human

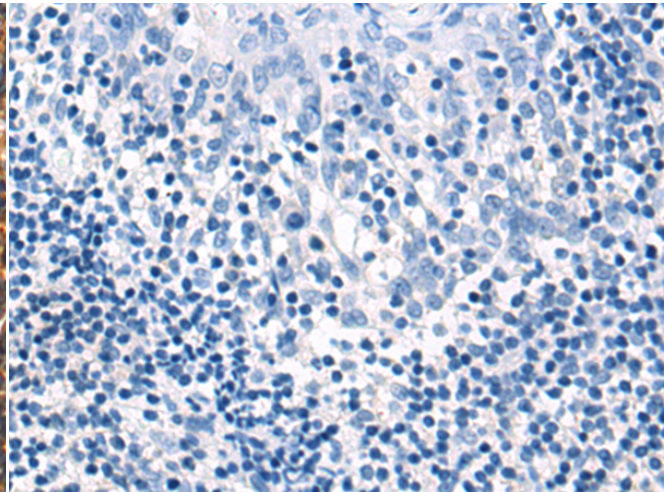
成分: PBS (without Mg²⁺ and Ca²⁺), pH 7.4, 150 mM NaCl, 0.05% Sodium Azide and 40% glycerol

研究领域: Neuroscience, Signal Transduction

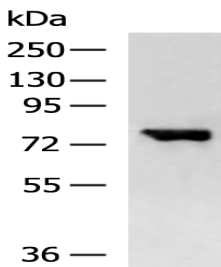
储存和运输: Store at -20°C. Avoid repeated freezing and thawing



Immunohistochemistry analysis of paraffin embedded Human tonsil tissue using 219516 (SHCBP1 Antibody) at a dilution of 1/85 (cytoplasm).



In comparison with the IHC on the left, the same paraffin-embedded Human tonsil tissue is first treated with the fusion protein and then with 219516 (Anti-SHCBP1 Antibody) at dilution 1/85.



Gel: 6% SDS-PAGE, Lysate: 40 µg;

Lane: HeLa cell lysate;

Primary antibody: 219516 (SHCBP1 Antibody) at dilution 1/600;

Secondary antibody: HRP-conjugated Goat anti rabbit IgG at 1/5000 dilution;

Exposure time: 15 seconds