

## SHC4 RABBIT PAB

货号: S219162

产品全名: SHC4 兔多抗

基因符号 RaLP; SHCD

**UNIPROT ID:** Q6S5L8 (Gene Accession - BC033907)

**背景:** Activates both Ras-dependent and Ras-independent migratory pathways in melanomas. Contributes to the early phases of agrin-induced tyrosine phosphorylation of CHRNBL.

**抗原:** Fusion protein of human SHC4

**经过测试的应用:** ELISA, IHC

**推荐稀释比:** IHC: 70-350; ELISA: 5000-10000

**种属反应性:** Rabbit

**克隆性:** Rabbit Polyclonal

**亚型:** Immunogen-specific rabbit IgG

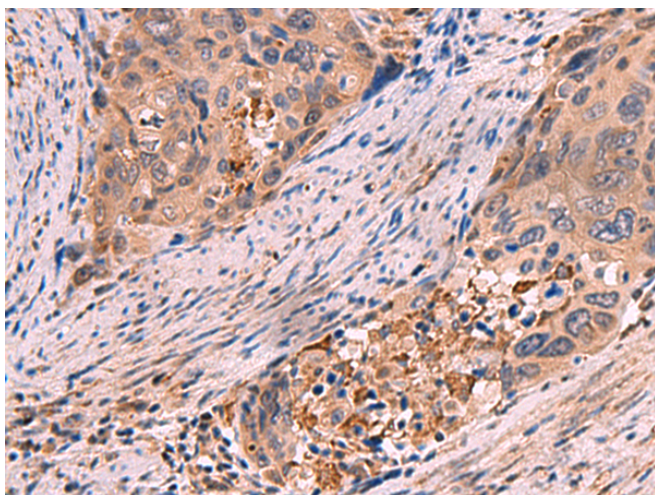
**纯化:** Antigen affinity purification

**种属反应性:** Human

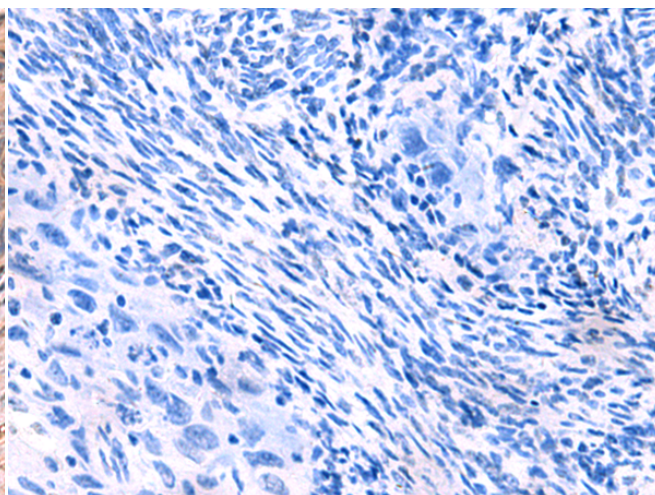
**成分:** PBS (without Mg<sup>2+</sup> and Ca<sup>2+</sup>), pH 7.4, 150 mM NaCl, 0.05% Sodium Azide and 40% glycerol

**研究领域:** Signal Transduction

**储存和运输:** Store at -20°C. Avoid repeated freezing and thawing



Immunohistochemistry analysis of paraffin embedded Human cervical cancer tissue using 219162(SHC4 Antibody) at a dilution of 1/85(Cytoplasm).



In comparison with the IHC on the left, the same paraffin-embedded Human cervical cancer tissue is first treated with the fusion protein and then with 219162(Anti-SHC4 Antibody) at dilution 1/85.