

SH2B2 RABBIT PAB

货号: S220388

产品全名: SH2B2 兔多抗

基因符号: APS

UNIPROT ID: O14492 (Gene Accession - NP_066189)

背景: The protein encoded by this gene is expressed in B lymphocytes and contains pleckstrin homology and src homology 2 (SH2) domains. In Burkitt's lymphoma cell lines, it is tyrosine-phosphorylated in response to B cell receptor stimulation. Because it binds Shc independent of stimulation and Grb2 after stimulation, it appears to play a role in signal transduction from the receptor to the Shc/Grb2 pathway.

抗原: Synthetic peptide of human SH2B2

经过测试的应用: ELISA, IHC

推荐稀释比: IHC: 15-50; ELISA: 1000-2000

种属反应性: Rabbit

克隆性: Rabbit Polyclonal

亚型: Immunogen-specific rabbit IgG

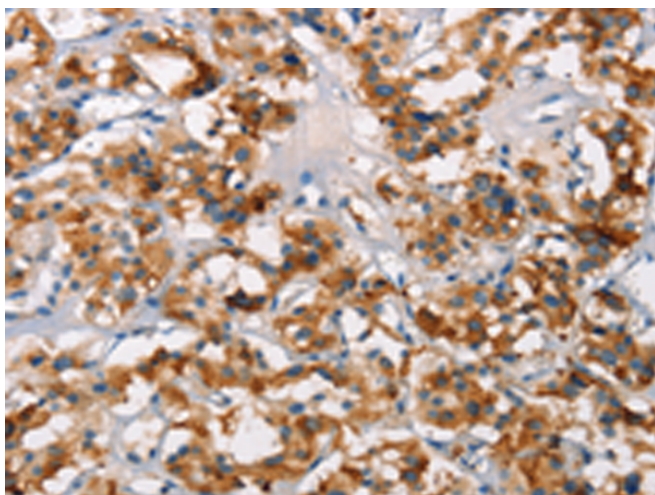
纯化: Antigen affinity purification

种属反应性: Human, Rat

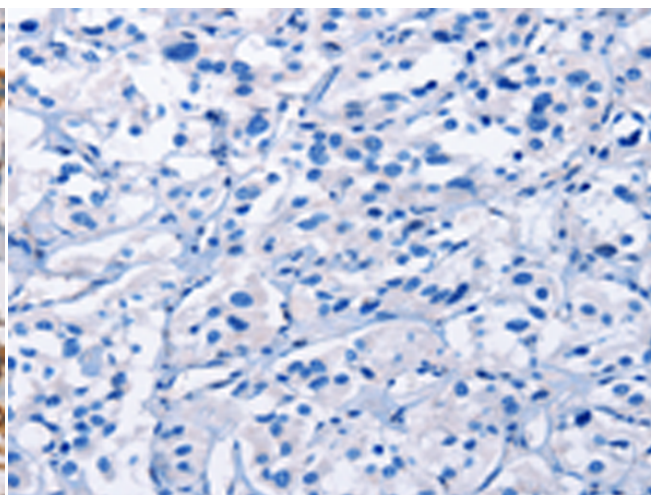
成分: PBS (without Mg²⁺ and Ca²⁺), pH 7.4, 150 mM NaCl, 0.05% Sodium Azide and 40% glycerol

研究领域: Signal Transduction

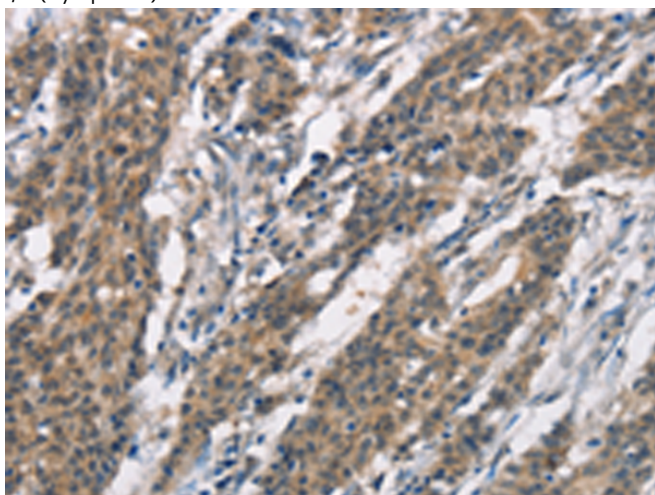
储存和运输: Store at -20°C. Avoid repeated freezing and thawing



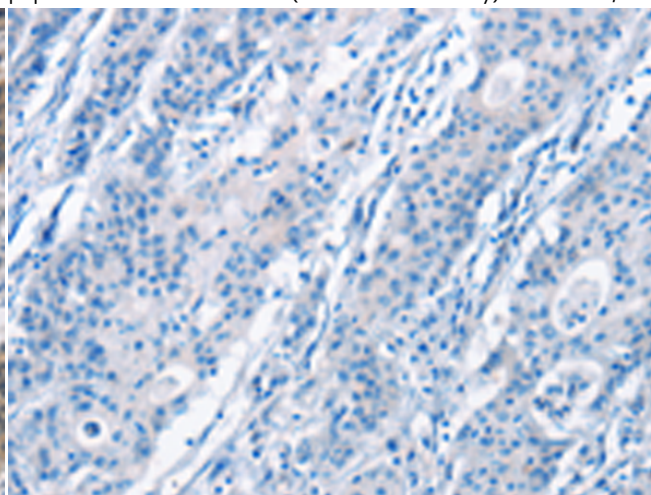
Immunohistochemistry analysis of paraffin embedded Human thyroid cancer tissue using 220388(SH2B2 Antibody) at a dilution of 1/15(Cytoplasm).



In comparison with the IHC on the left, the same paraffin-embedded Human thyroid cancer tissue is first treated with the synthetic peptide and then with 220388(Anti-SH2B2 Antibody) at dilution 1/15.



The image on the left is immunohistochemistry of paraffin-embedded Human gastric cancer tissue using 220388(Anti-SH2B2 Antibody) at a dilution of 1/15.



In comparison with the IHC on the left, the same paraffin-embedded Human gastric cancer tissue is first treated with synthetic peptide and then with D261464(Anti-SH2B2 Antibody) at dilution 1/15.



Product Description

Pioneering GTPase and Oncogene Product Development since 2010
