

## SGLT1 RABBIT PAB

货号: N225493

产品全名: SGLT1 兔多抗

基因符号 SLC5A1; NAGT; SGLT1; Sodium/glucose cotransporter 1; Na(+)/glucose cotransporter 1; High affinity sodium-glucose cotransporter; Solute carrier family 5 member 1

**UNIPROT ID:** P13866

背景: Actively transports glucose into cells by Na<sup>+</sup> cotransport with a Na<sup>+</sup> to glucose coupling ratio of 2:1. Efficient substrate transport in mammalian kidney is provided by the concerted action of a low affinity high capacity and a high affinity low capacity Na<sup>+</sup>/glucose cotransporter arranged in series along kidney proximal tubules.

抗原: The antiserum was produced against synthesized peptide derived from human SGLT-1. AA range:525-574

经过测试的应用: WB,ELISA

推荐稀释比: WB: 1/500-1/1000 ELISA: 1/10000

种属反应性: Rabbit

克隆性: Rabbit Polyclonal

分子量: Calculated MW: 73 kDa; Observed MW: 73 kDa

亚型: IgG

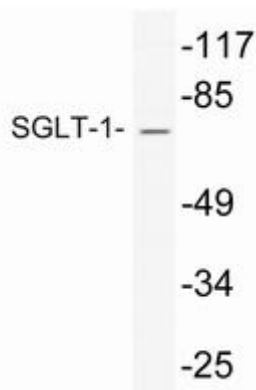
纯化: Affinity Chromatography

种属反应性: Human, Mouse and Rat

成分: PBS (without Mg<sup>2+</sup> and Ca<sup>2+</sup>), pH 7.3 containing 50% glycerol, 0.5% BSA and 0.02% sodium azide

研究领域: Signal Transduction

储存和运输: Store at -20°C. Avoid repeated freezing and thawing



Western blot analysis of SGLT1 in HepG2 lysates using SGLT1 antibody.



# Product Description

Pioneering GTPase and Oncogene Product Development since 2010

---