

SGCG RABBIT PAB

货号: S221895

产品全名: SGCG 兔多抗

基因符号 A4; MAM; DMDA; SCG3; 35DAG; DAGA4; DMDA1; LGMD2C; LGMDR5; SCARMD2; gamma-SG

UNIPROT ID: Q13326 (Gene Accession - NP_000222)

背景: This gene encodes gamma-sarcoglycan, one of several sarcolemmal transmembrane glycoproteins that interact with dystrophin. The dystrophin-glycoprotein complex (DGC) spans the sarcolemma and is comprised of dystrophin, syntrophin, alpha- and beta-dystroglycans and sarcoglycans. The DGC provides a structural link between the subsarcolemmal cytoskeleton and the extracellular matrix of muscle cells. Defects in the encoded protein can lead to early onset autosomal recessive muscular dystrophy, in particular limb-girdle muscular dystrophy, type 2C (LGMD2C).

抗原: Synthetic peptide of human SGCG

经过测试的应用: ELISA, WB, IHC

推荐稀释比: IHC: 50-200;WB: 200-1000;ELISA: 5000-10000

种属反应性: Rabbit

克隆性: Rabbit Polyclonal

亚型: Immunogen-specific rabbit IgG

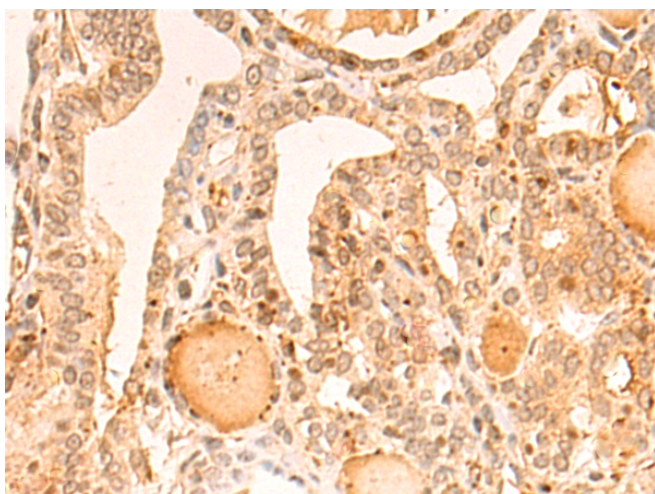
纯化: Antigen affinity purification

种属反应性: Human, Mouse

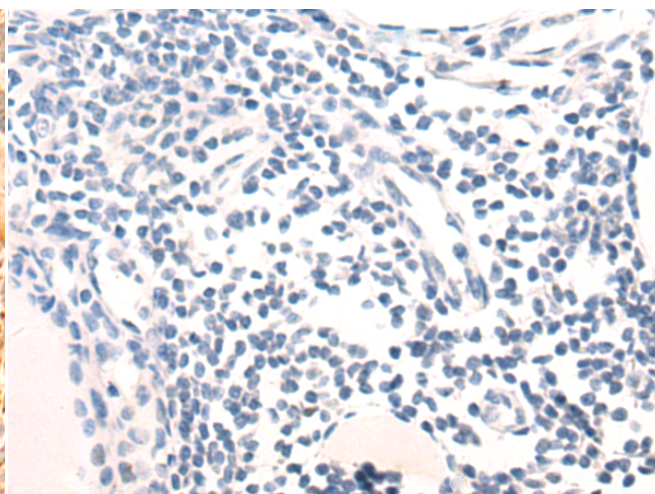
成分: PBS (without Mg²⁺ and Ca²⁺), pH 7.4, 150 mM NaCl, 0.05% Sodium Azide and 40% glycerol

研究领域: Signal Transduction

储存和运输: Store at -20°C. Avoid repeated freezing and thawing



Immunohistochemistry analysis of paraffin embedded Human thyroid cancer tissue using 221895 (SGCG Antibody) at a dilution of 1/55 (Cytoplasm and Cell membrane).



In comparison with the IHC on the left, the same paraffin-embedded Human thyroid cancer tissue is first treated with the synthetic peptide and then with 221895 (Anti-SGCG Antibody) at dilution 1/55.

kDa

130 —
95 —
72 —
55 —
36 —
28 —
17 —



Gel: 8%SDS-PAGE, Lysate: 40 µg;

Lane: Mouse liver tissue lysate;

Primary antibody: 221895 (SGCG Antibody) at dilution 1/400;

Secondary antibody: HRP-conjugated Goat anti rabbit IgG at 1/5000 dilution;

Exposure time: 30 seconds