

SFTPD RABBIT PAB

货号: S216800

产品全名: SFTPD 兔多抗

基因符号 SP-D; PSP-D; SFTP4; COLEC7

UNIPROT ID: P35247 (Gene Accession - BC022318)

背景: The protein encoded by this gene is part of the innate immune response, protecting the lungs against inhaled microorganisms and chemicals. The encoded protein may also be involved in surfactant metabolism. [provided by RefSeq, Jul 2015]

抗原: Fusion protein of human SFTPD

经过测试的应用: ELISA, IHC

推荐稀释比: IHC: 50-200; ELISA: 5000-10000

种属反应性: Rabbit

克隆性: Rabbit Polyclonal

亚型: Immunogen-specific rabbit IgG

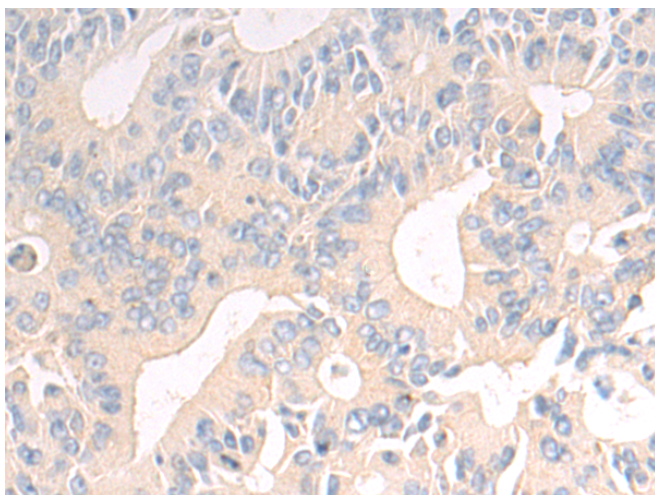
纯化: Antigen affinity purification

种属反应性: Human

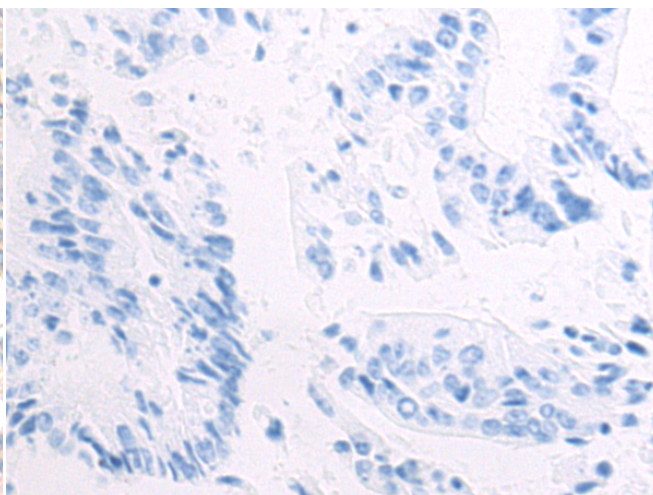
成分: PBS (without Mg²⁺ and Ca²⁺), pH 7.4, 150 mM NaCl, 0.05% Sodium Azide and 40% glycerol

研究领域: Signal Transduction, Cancer, Metabolism, Cell Biology, Immunology

储存和运输: Store at -20°C. Avoid repeated freezing and thawing



Immunohistochemistry analysis of paraffin embedded Human colorectal cancer tissue using 216800(SFTPD Antibody) at a dilution of 1/55(Cytoplasm).



In comparison with the IHC on the left, the same paraffin-embedded Human colorectal cancer tissue is first treated with the fusion protein and then with 216800(Anti-SFTPD Antibody) at dilution 1/55.