

SFTPA1 RABBIT PAB

货号: S217847

产品全名: SFTPA1 兔多抗

基因符号 SPA; ILDI; PSAP; PSPA; SP-A; SPA1; PSP-A; SFTPI; SP-A1; COLEC4; SFTPA1B; SP-A1 beta; SP-A1 delta; SP-A1 gamma; SP-A1 epsilon

UNIPROT ID: Q8IWL2 (Gene Accession - BC111570)

背景: This gene encodes a lung surfactant protein that is a member of a subfamily of C-type lectins called collectins. The encoded protein binds specific carbohydrate moieties found on lipids and on the surface of microorganisms. This protein plays an essential role in surfactant homeostasis and in the defense against respiratory pathogens. Mutations in this gene are associated with idiopathic pulmonary fibrosis. Alternate splicing results in multiple transcript variants. [provided by RefSeq, May 2010]

抗原: Fusion protein of human SFTPA1

经过测试的应用: ELISA, IHC

推荐稀释比: IHC: 100-200; ELISA: 5000-10000

种属反应性: Rabbit

克隆性: Rabbit Polyclonal

亚型: Immunogen-specific rabbit IgG

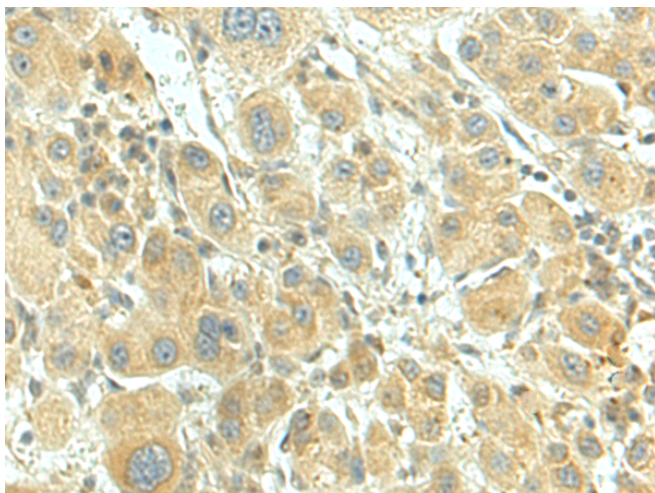
纯化: Antigen affinity purification

种属反应性: Human

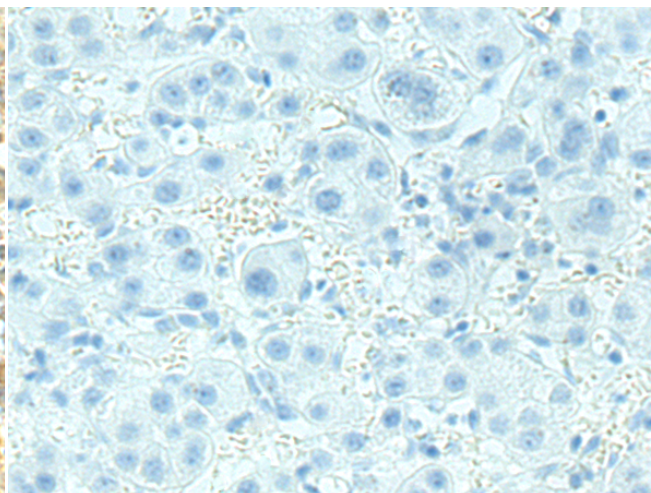
成分: PBS (without Mg²⁺ and Ca²⁺), pH 7.4, 150 mM NaCl, 0.05% Sodium Azide and 40% glycerol

研究领域: Signal Transduction

储存和运输: Store at -20°C. Avoid repeated freezing and thawing



Immunohistochemistry analysis of paraffin embedded Human liver cancer tissue using 217847(SFTPA1 Antibody) at a dilution of 1/120(Cytoplasm).



In comparison with the IHC on the left, the same paraffin-embedded Human liver cancer tissue is first treated with the fusion protein and then with 217847(Anti-SFTPA1 Antibody) at dilution 1/120.