

## SFPQ RABBIT MAB

货号: N262889

产品全名: SFPQ 兔单克隆抗体

基因符号 PSF; POMP100; PPP1R140

**UNIPROT ID:** P23246

**背景:** DNA- and RNA binding protein, involved in several nuclear processes. Essential pre-mRNA splicing factor required early in spliceosome formation and for splicing catalytic step II, probably as a heteromer with NONO. Binds to pre-mRNA in spliceosome C complex, and specifically binds to intronic polypyrimidine tracts.

**抗原:** A synthetic peptide of human SFPQ

**经过测试的应用:** WB,IHC-F,IHC-P,ICC/IF

**推荐稀释比:** WB: 1/500-1/1000 IHC: 1/50-1/100 IF: 1/50-1/200

**种属反应性:** Rabbit

**克隆性:** Rabbit Monoclonal

**克隆编号:** R07-9K6

**分子量:** Calculated MW: 76 kDa; Observed MW: 100 kDa

**亚型:** IgG

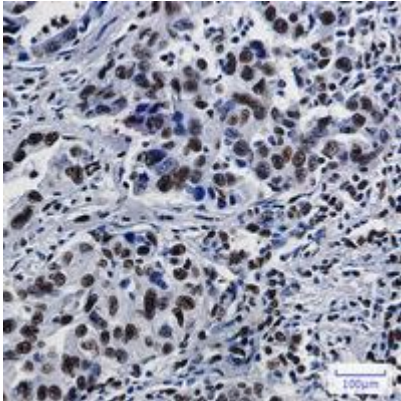
**纯化:** Affinity Purified

**种属反应性:** Human, Mouse and Rat

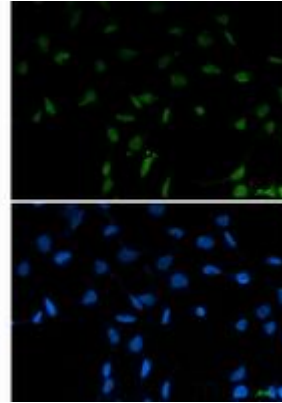
**成分:** PBS (without Mg<sup>2+</sup> and Ca<sup>2+</sup>), pH 7.3 containing 50% glycerol, 0.5% BSA and 0.02% sodium azide

**研究领域:** Epigenetics and Nuclear Signaling

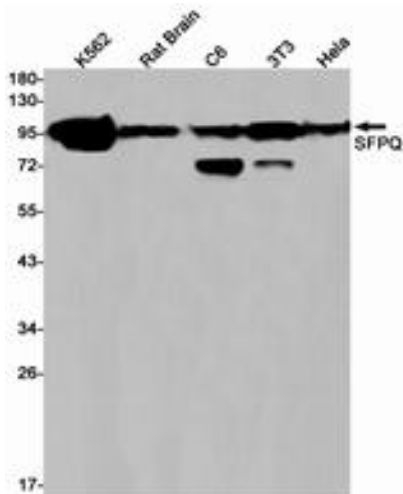
**储存和运输:** Store at -20°C. Avoid repeated freezing and thawing



Immunohistochemistry analysis of paraffin-embedded Human lung cancer tissue using SFPQ antibody. High-pressure and temperature Sodium Citrate pH 6.0 was used for antigen retrieval.



Immunocytochemistry analysis of SFPQ (green) in 293T using SFPQ antibody, and DAPI (blue).



Western blot analysis of SFPQ in K562, rat Brain, C6, 3T3, HeLa lysates using SFPQ antibody.