

SF3B1 RABBIT MAB

货号: N263546

产品全名: SF3B1 兔单克隆抗体

基因符号 SF3B1; SAP155; Splicing factor 3B subunit 1; Pre-mRNA-splicing factor SF3b 155 kDa subunit; SF3b155; Spliceosome-associated protein 155; SAP 155

UNIPROT ID: O75533

背景: SF3B1 is subunit 1 of the splicing factor 3b protein complex. Splicing factor 3b, together with splicing factor 3a and a 12S RNA unit, forms the U2 small nuclear ribonucleoproteins complex (U2 snRNP). The splicing factor 3b/3a complex binds pre-mRNA upstream of the intron's branch site in a sequence independent manner and may anchor the U2 snRNP to the pre-mRNA.

抗原: A synthetic peptide of human SF3B1

经过测试的应用: WB,IHC-F,IHC-P,ICC/IF

推荐稀释比: WB: 1/500-1/1000 IHC: 1/50-1/100 IF: 1/50-1/200

种属反应性: Rabbit

克隆性: Rabbit Monoclonal

克隆编号: R08-612

分子量: Calculated MW: 146 kDa; Observed MW: 155 kDa

亚型: IgG

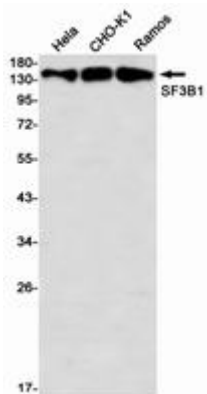
纯化: Affinity Purified

种属反应性: Human,Mouse,Hamster,Rat

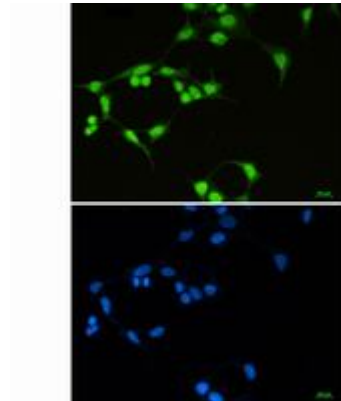
成分: PBS (without Mg²⁺ and Ca²⁺), pH 7.3 containing 50% glycerol, 0.5% BSA and 0.02% sodium azide

研究领域: Epigenetics and Nuclear Signaling

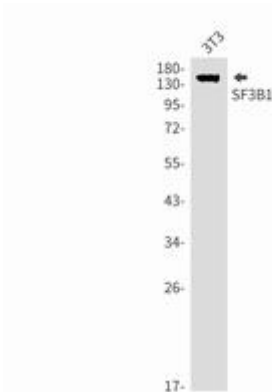
储存和运输: Store at -20°C. Avoid repeated freezing and thawing



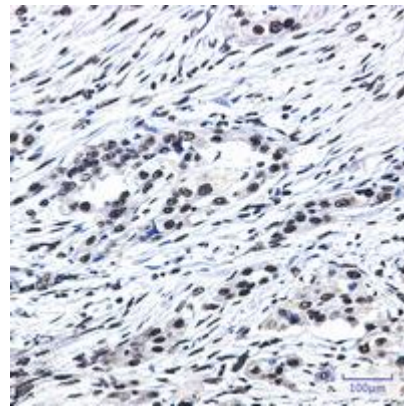
Western blot analysis of SF3B1 in HeLa, CHO-K1, C6, Ramos lysates using SF3B1 antibody



Immunocytochemistry analysis of SF3B1 (green) in 293T using SF3B1 antibody, and DAPI (blue).



Western blot analysis of SF3B1 in 3T3 lysates using SF3B1 antibody.



Immunohistochemistry analysis of paraffin-embedded Human lung cancer using SF3B1 antibody. High-pressure and temperature Sodium Citrate pH 6.0 was used for antigen retrieval.