

SF2 RABBIT MAB

货号: N262887

产品全名: SF2 兔单克隆抗体

基因符号 ASF; SF2; SFRS1; SF2p33; SRp30a

UNIPROT ID: Q07955

背景: Plays a role in preventing exon skipping, ensuring the accuracy of splicing and regulating alternative splicing. Interacts with other spliceosomal components, via the RS domains, to form a bridge between the 5'- and 3'-splice site binding components, U1 snRNP and U2AF.

抗原: A synthetic peptide of human SF2

经过测试的应用: WB,IHC-F,IHC-P,ICC/IF

推荐稀释比: WB: 1/500-1/1000 IHC: 1/50-1/100 IF: 1/50-1/200

种属反应性: Rabbit

克隆性: Rabbit Monoclonal

克隆编号: R07-9G7

分子量: Calculated MW: 28 kDa; Observed MW: 28 kDa

亚型: IgG

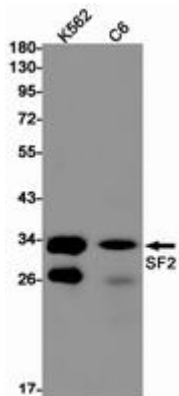
纯化: Affinity Purified

种属反应性: Human, Mouse and Rat

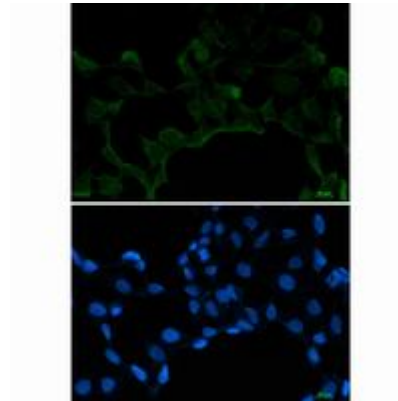
成分: PBS (without Mg²⁺ and Ca²⁺), pH 7.3 containing 50% glycerol, 0.5% BSA and 0.02% sodium azide

研究领域: Epigenetics and Nuclear Signaling

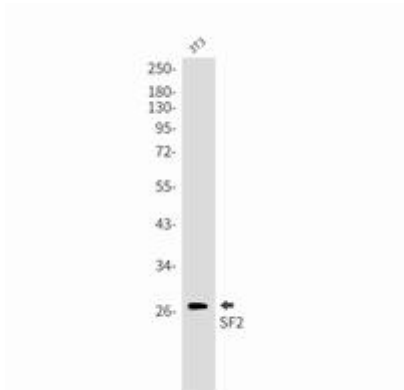
储存和运输: Store at -20°C. Avoid repeated freezing and thawing



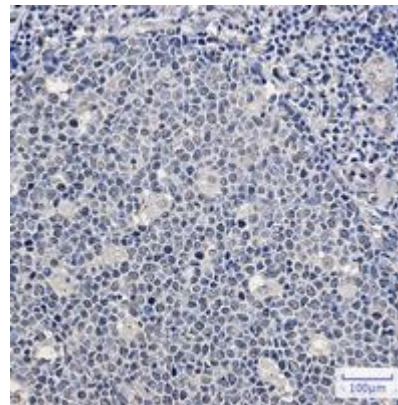
Western blot analysis of SF2 in K562, C6 lysates using SF2 antibody



Immunocytochemistry analysis of SF2 (green) in 293T using SF2 antibody, and DAPI (blue).



Western blot analysis of SF2 in 3T3 lysates using SF2 antibody.



Immunohistochemistry analysis of paraffin-embedded Human tonsil using SF2 antibody. High-pressure and temperature Sodium Citrate pH 6.0 was used for antigen retrieval.