

SEZ6L RABBIT PAB

货号: S220903

产品全名: SEZ6L 兔多抗

基因符号

UNIPROT ID: Q9BYH1 (Gene Accession - NP_066938)

背景: Predicted to act upstream of or within adult locomotory behavior; nervous system development; and regulation of protein kinase C signaling. Predicted to be located in endoplasmic reticulum and neuronal cell body.

抗原: Synthetic peptide of human SEZ6L

经过测试的应用: ELISA, WB, IHC

推荐稀释比: IHC: 50-200;WB: 1000-5000;ELISA: 5000-10000

种属反应性: Rabbit

克隆性: Rabbit Polyclonal

亚型: Immunogen-specific rabbit IgG

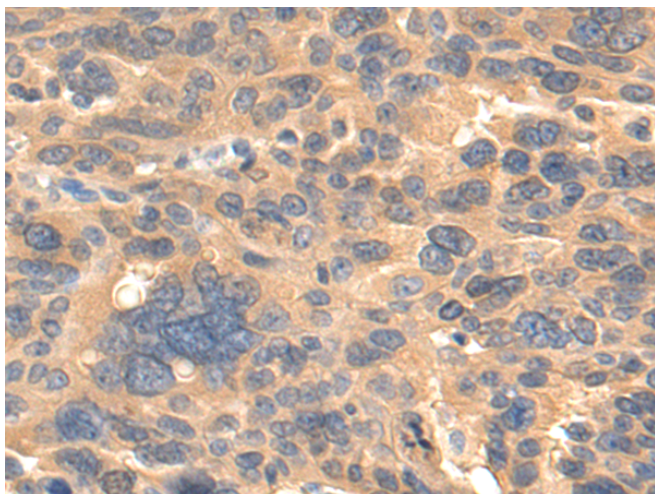
纯化: Antigen affinity purification

种属反应性: Human, Mouse

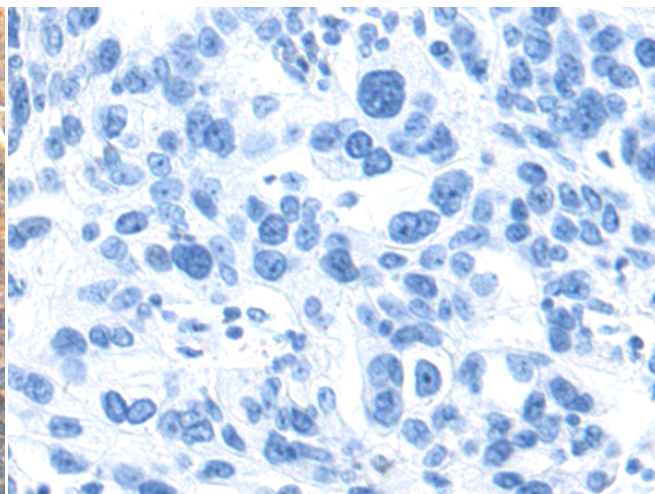
成分: PBS (without Mg²⁺ and Ca²⁺), pH 7.4, 150 mM NaCl, 0.05% Sodium Azide and 40% glycerol

研究领域: Cancer, Neuroscience

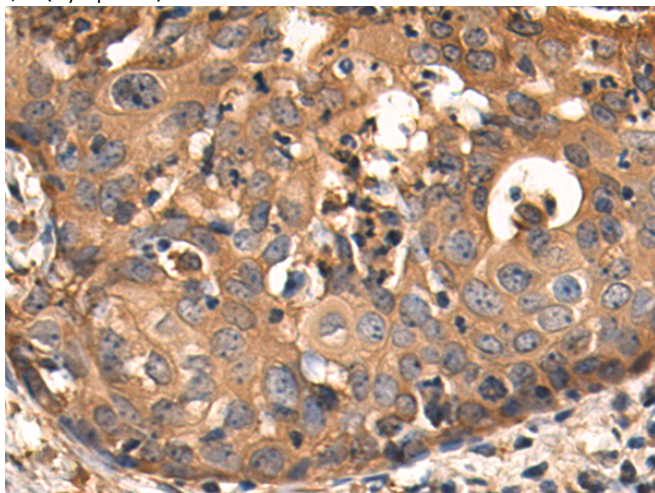
储存和运输: Store at -20°C. Avoid repeated freezing and thawing



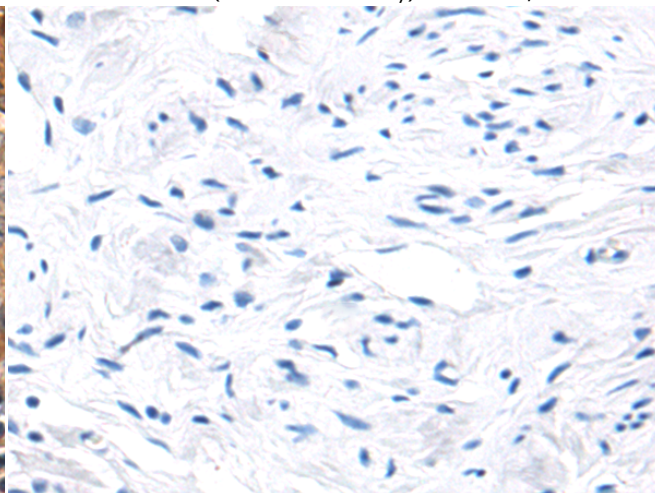
Immunohistochemistry analysis of paraffin embedded Human breast cancer tissue using 220903(SEZ6L Antibody) at a dilution of 1/50(Cytoplasm).



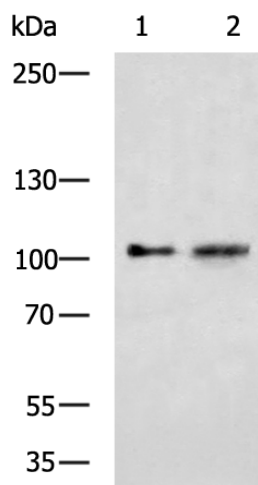
In comparison with the IHC on the left, the same paraffin-embedded Human breast cancer tissue is first treated with the synthetic peptide and then with 220903(Anti-SEZ6L Antibody) at dilution 1/50.



The image on the left is immunohistochemistry of paraffin-embedded Human cervical cancer tissue using 220903(Anti-SEZ6L Antibody) at a dilution of 1/50.



In comparison with the IHC on the left, the same paraffin-embedded Human cervical cancer tissue is first treated with synthetic peptide and then with D262196(Anti-SEZ6L Antibody) at dilution 1/50.



Gel: 6%SDS-PAGE, Lysate: 40 µg;
Lane 1-2: HeLa and RAMOS cell lysates;
Primary antibody: 220903(SEZ6L Antibody) at dilution 1/1000;
Secondary antibody: HRP-conjugated Goat anti rabbit IgG at 1/5000 dilution;
Exposure time: 1 minute

