

SESTD1 RABBIT PAB

货号: S219576

产品全名: SESTD1 兔多抗

基因符号 SOLO

UNIPROT ID: Q86VW0 (Gene Accession - BC047578)

背景: Enables phosphatidylinositol-3,4-bisphosphate binding activity and phospholipid binding activity. Involved in negative regulation of calcium ion transmembrane transport via high voltage-gated calcium channel. Located in intermediate filament cytoskeleton. Colocalizes with calcium channel complex.

抗原: Fusion protein of human SESTD1

经过测试的应用: ELISA, IHC

推荐稀释比: IHC: 50-200; ELISA: 5000-10000

种属反应性: Rabbit

克隆性: Rabbit Polyclonal

亚型: Immunogen-specific rabbit IgG

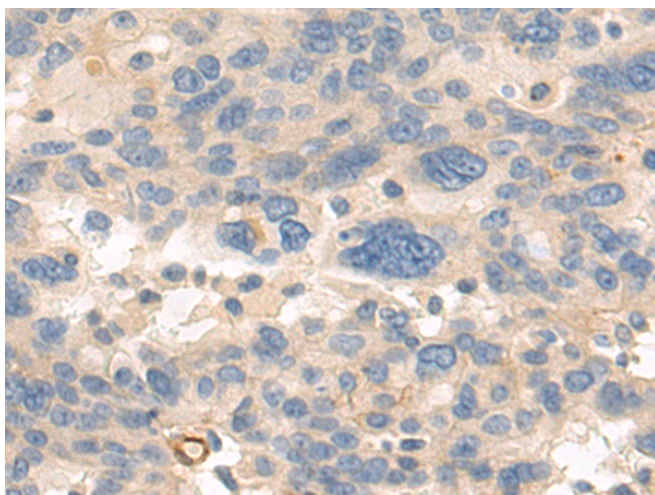
纯化: Antigen affinity purification

种属反应性: Human, Mouse

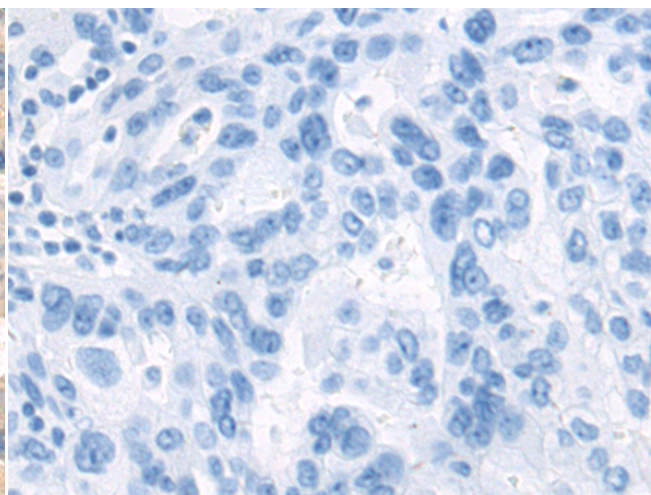
成分: PBS (without Mg²⁺ and Ca²⁺), pH 7.4, 150 mM NaCl, 0.05% Sodium Azide and 40% glycerol

研究领域: Signal Transduction, Metabolism

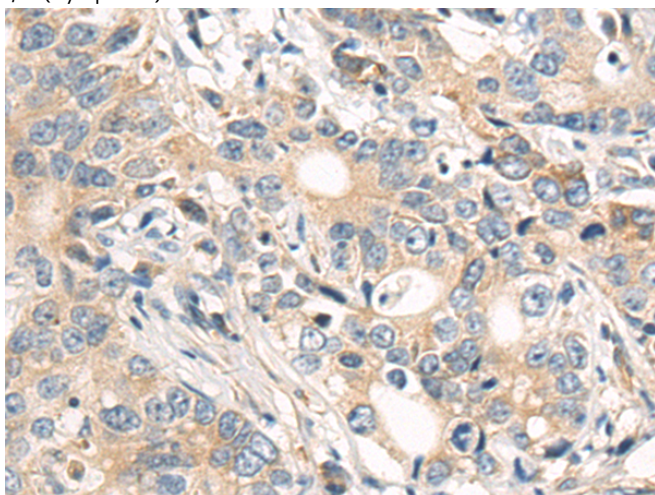
储存和运输: Store at -20°C. Avoid repeated freezing and thawing



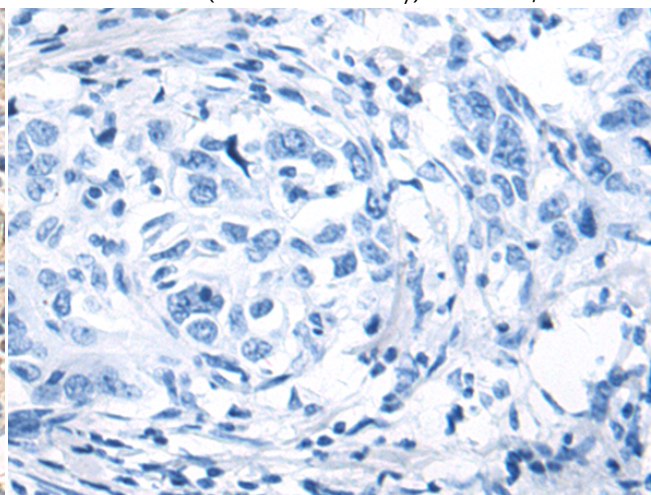
Immunohistochemistry analysis of paraffin embedded Human breast cancer tissue using 219576(SESTD1 Antibody) at a dilution of 1/70(Cytoplasm).



In comparison with the IHC on the left, the same paraffin-embedded Human breast cancer tissue is first treated with the fusion protein and then with 219576(Anti-SESTD1 Antibody) at dilution 1/70.



The image on the left is immunohistochemistry of paraffin-embedded Human gastric cancer tissue using 219576(Anti-SESTD1 Antibody) at a dilution of 1/70.



In comparison with the IHC on the left, the same paraffin-embedded Human gastric cancer tissue is first treated with fusion protein and then with D227825(Anti-SESTD1 Antibody) at dilution 1/70.



Product Description

Pioneering GTPase and Oncogene Product Development since 2010
