

SERTAD3 RABBIT PAB

货号: S211534

产品全名: SERTAD3 兔多抗

基因符号: RBT1

UNIPROT ID: Q9UJW9 (Gene Accession - BC014061)

背景: The protein encoded by this gene was identified in a yeast two-hybrid assay employing the second subunit of human replication protein A as bait. It is localized to the nucleus and its expression is significantly higher in cancer cell lines compared to normal cell lines. This protein has also been shown to be a strong transcriptional co-activator. Alternative splicing has been observed at this locus and two variants, both encoding the same protein, have been identified.

抗原: Fusion protein of human SERTAD3

经过测试的应用: ELISA, IHC

推荐稀释比: IHC: 200-400; ELISA: 5000-10000

种属反应性: Rabbit

克隆性: Rabbit Polyclonal

亚型: Immunogen-specific rabbit IgG

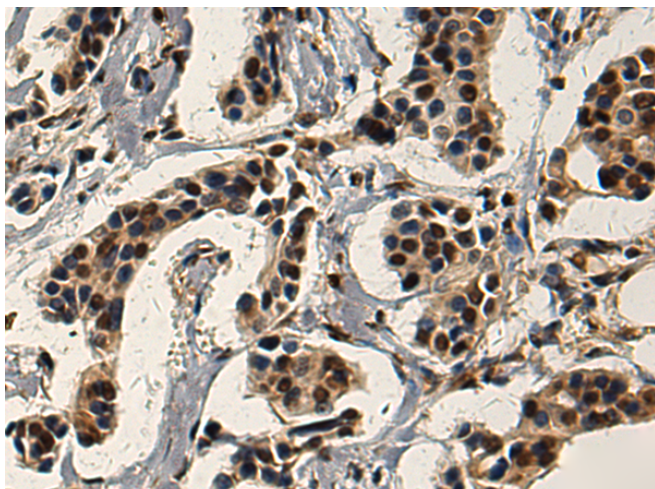
纯化: Antigen affinity purification

种属反应性: Human, Mouse

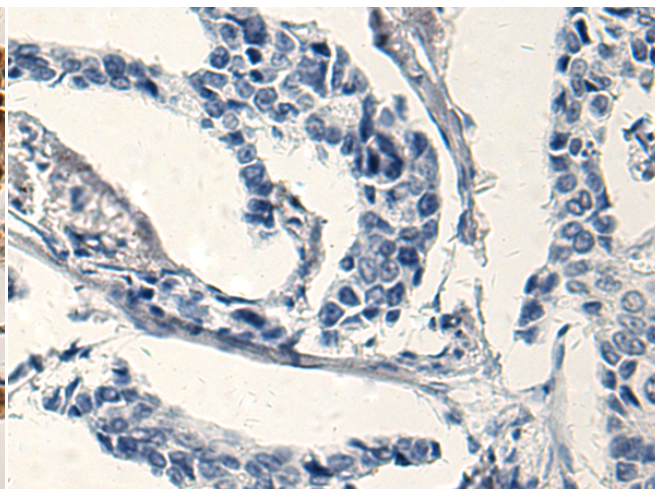
成分: PBS (without Mg²⁺ and Ca²⁺), pH 7.4, 150 mM NaCl, 0.05% Sodium Azide and 40% glycerol

研究领域: Epigenetics and Nuclear Signaling

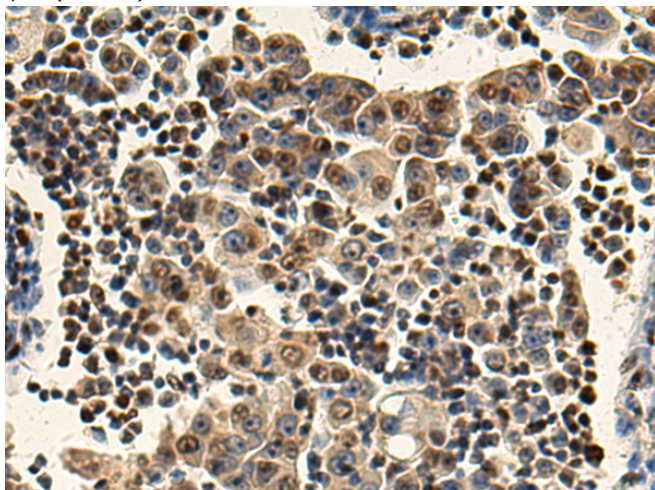
储存和运输: Store at -20°C. Avoid repeated freezing and thawing



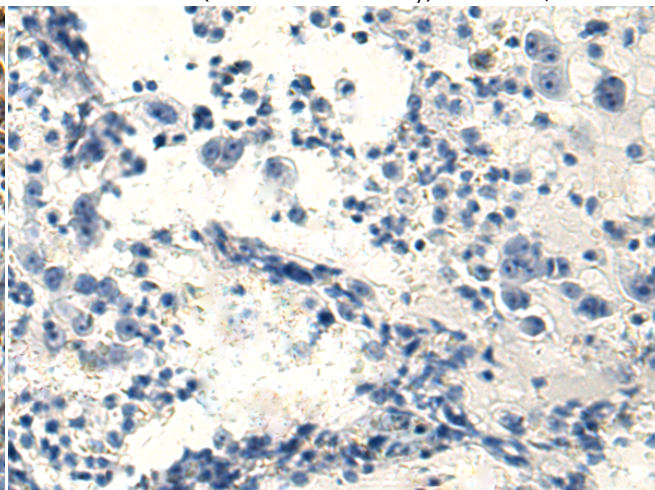
Immunohistochemistry analysis of paraffin embedded Human breast cancer tissue using 211534(SERTAD3 Antibody) at a dilution of 1/220(Nucleus).



In comparison with the IHC on the left, the same paraffin-embedded Human breast cancer tissue is first treated with the fusion protein and then with 211534(Anti-SERTAD3 Antibody) at dilution 1/220.



The image on the left is immunohistochemistry of paraffin-embedded Human lung cancer tissue using 211534(Anti-SERTAD3 Antibody) at a dilution of 1/220.



In comparison with the IHC on the left, the same paraffin-embedded Human lung cancer tissue is first treated with fusion protein and then with D123110(Anti-SERTAD3 Antibody) at dilution 1/220.



Product Description

Pioneering GTPase and Oncogene Product Development since 2010
