

SERPINA5 RABBIT PAB

货号: S216887

产品全名: SERPINA5 兔多抗

基因符号: PCI; PAI3; PAI-3; PCI-B; PROCI; PLANH3

UNIPROT ID: P05154 (Gene Accession - BC008915)

背景: The protein encoded by this gene is a member of the serpin family of proteins, a group of proteins that inhibit serine proteases. This gene is one in a cluster of serpin genes located on the q arm of chromosome 14. This family member is a glycoprotein that can inhibit several serine proteases, including protein C and various plasminogen activators and kallikreins, and it thus plays diverse roles in hemostasis and thrombosis in multiple organs.

抗原: Fusion protein of human SERPINA5

经过测试的应用: ELISA, WB, IHC

推荐稀释比: IHC: 50-200; WB: 1000-5000; ELISA: 2000-10000

种属反应性: Rabbit

克隆性: Rabbit Polyclonal

亚型: Immunogen-specific rabbit IgG

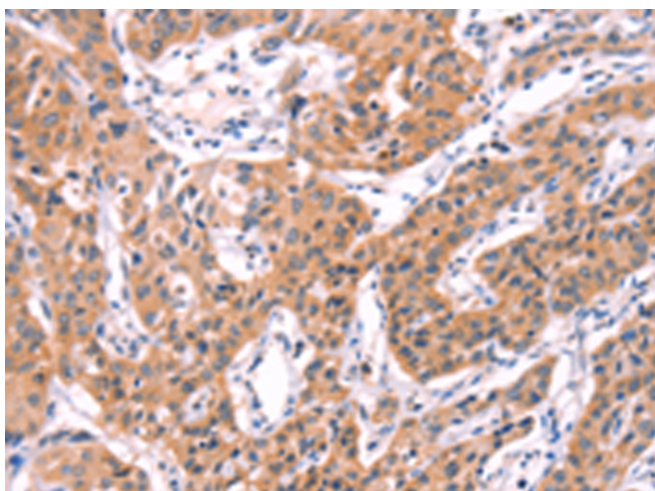
纯化: Antigen affinity purification

种属反应性: Human

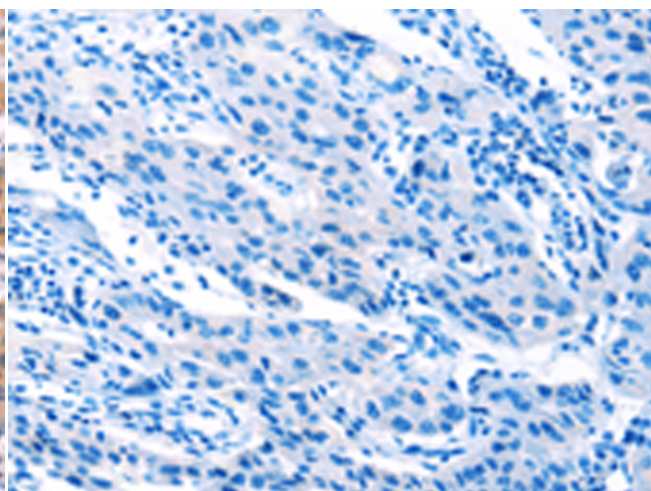
成分: PBS (without Mg²⁺ and Ca²⁺), pH 7.4, 150 mM NaCl, 0.05% Sodium Azide and 40% glycerol

研究领域: Cardiovascular, Cancer, Cell Biology

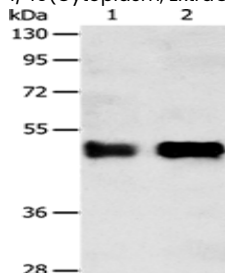
储存和运输: Store at -20°C. Avoid repeated freezing and thawing



Immunohistochemistry analysis of paraffin embedded Human lung cancer tissue using 216887 (SERPINA5 Antibody) at a dilution of 1/40 (Cytoplasm, ExtraCellular space).



In comparison with the IHC on the left, the same paraffin-embedded Human lung cancer tissue is first treated with the fusion protein and then with 216887 (Anti-SERPINA5 Antibody) at dilution 1/40.



Gel: 10%SDS-PAGE, Lysate: 40 µg;
Lane 1-2: Human liver cancer tissue, A549 cells;
Primary antibody: 216887 (SERPINA5 Antibody) at dilution 1/750;
Secondary antibody: Goat anti rabbit IgG at 1/8000 dilution;
Exposure time: 10 minutes