

SERPINA12 RABBIT PAB

货号: S217806

产品全名: SERPINA12 兔多抗

基因符号 OL-64

UNIPROT ID: Q8IW75 (Gene Accession - BC040857)

背景: Predicted to enable serine-type endopeptidase inhibitor activity. Predicted to be involved in negative regulation of endopeptidase activity. Predicted to act upstream of or within negative regulation of gluconeogenesis; positive regulation of signal transduction; and regulation of lipid metabolic process. Predicted to be located in plasma membrane. Predicted to be active in extracellular space. [provided by Alliance of Genome Resources, Apr 2022]

抗原: Fusion protein of human SERPINA12

经过测试的应用: ELISA, IHC

推荐稀释比: IHC: 50-200; ELISA: 5000-10000

种属反应性: Rabbit

克隆性: Rabbit Polyclonal

亚型: Immunogen-specific rabbit IgG

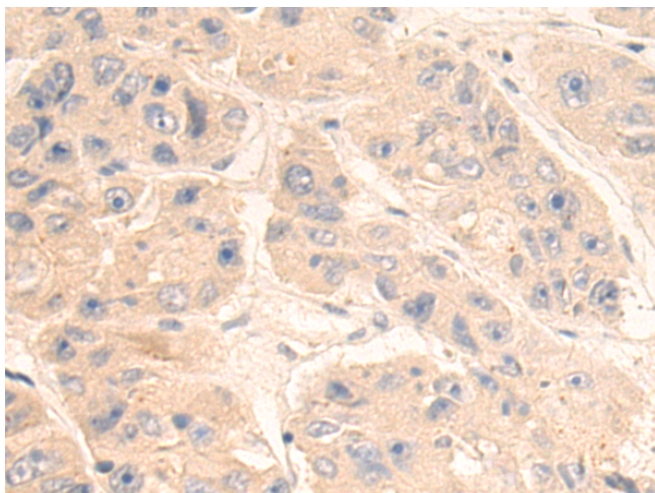
纯化: Antigen affinity purification

种属反应性: Human

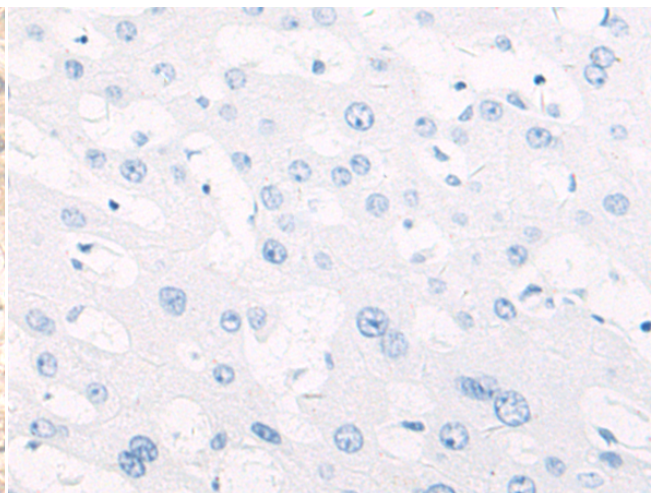
成分: PBS (without Mg²⁺ and Ca²⁺), pH 7.4, 150 mM NaCl, 0.05% Sodium Azide and 40% glycerol

研究领域: Signal Transduction, Metabolism, Cell Biology, Neuroscience, Cardiovascular

储存和运输: Store at -20°C. Avoid repeated freezing and thawing



Immunohistochemistry analysis of paraffin embedded Human liver cancer tissue using 217806(SERPINA12 Antibody) at a dilution of 1/80(Secreted).



In comparison with the IHC on the left, the same paraffin-embedded Human liver cancer tissue is first treated with the fusion protein and then with 217806(Anti-SERPINA12 Antibody) at dilution 1/80.