

SERPINA11 RABBIT PAB

货号: S220901

产品全名: SERPINA11 兔多抗

基因符号

UNIPROT ID: Q86U17 (Gene Accession - NP_001073920)

背景: The protein belongs to the serpin family. SERPINA11 has serine-type endopeptidase inhibitor activity, negative regulation of endopeptidase activity, regulation of proteolysis, serine-type endopeptidase inhibitor activity.

抗原: Synthetic peptide of human SERPINA11

经过测试的应用: ELISA, IHC

推荐稀释比: IHC: 25-100; ELISA: 1000-2000

种属反应性: Rabbit

克隆性: Rabbit Polyclonal

亚型: Immunogen-specific rabbit IgG

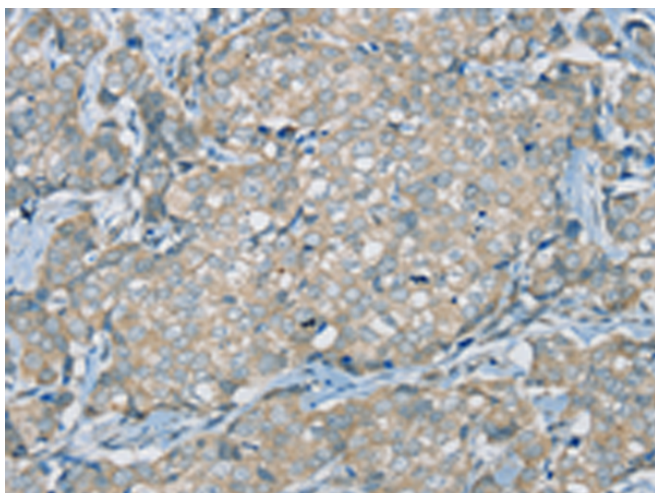
纯化: Antigen affinity purification

种属反应性: Human, Mouse, Rat

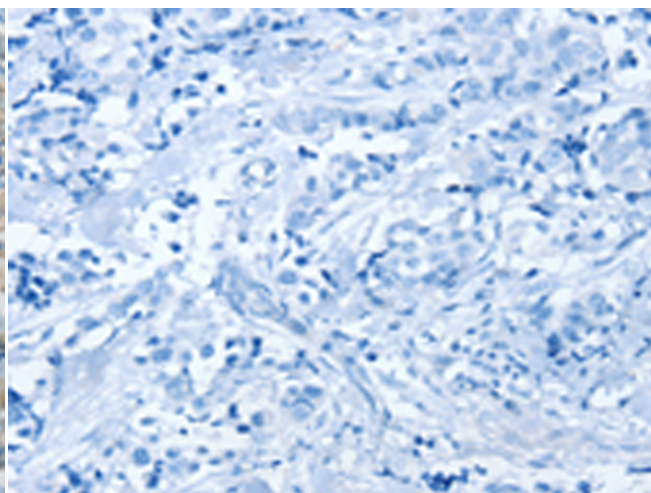
成分: PBS (without Mg²⁺ and Ca²⁺), pH 7.4, 150 mM NaCl, 0.05% Sodium Azide and 40% glycerol

研究领域: Cell Biology

储存和运输: Store at -20°C. Avoid repeated freezing and thawing



Immunohistochemistry analysis of paraffin embedded Human breast cancer tissue using 220901(SERPINA11 Antibody) at a dilution of 1/35(Secreted).



In comparison with the IHC on the left, the same paraffin-embedded Human breast cancer tissue is first treated with the synthetic peptide and then with 220901(Anti-SERPINA11 Antibody) at dilution 1/35.