

SERINE RACEMASE RABBIT MAB

货号: N263545

产品全名: Serine Racemase 兔单克隆抗体

基因符号 ILVI; ISO1

UNIPROT ID: Q9GZT4

背景: Catalyzes the synthesis of D-serine from L-serine.

抗原: A synthetic peptide of human Serine racemase

经过测试的应用: WB,IP

推荐稀释比: WB: 1/500-1/1000 IP: 1/20

种属反应性: Rabbit

克隆性: Rabbit Monoclonal

克隆编号: R03-1G5

分子量: Calculated MW: 37 kDa; Observed MW: 37 kDa

亚型: IgG

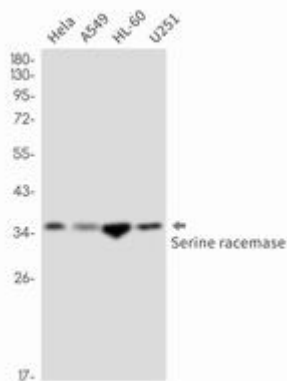
纯化: Affinity Purified

种属反应性: Human

成分: PBS (without Mg²⁺ and Ca²⁺), pH 7.3 containing 50% glycerol, 0.5% BSA and 0.02% sodium azide

研究领域: -

储存和运输: Store at -20°C. Avoid repeated freezing and thawing



Western blot analysis of Serine racemase in HeLa, A549, HL-60, U251 lysates using Serine Racemase antibody.