

SERINC1 RABBIT PAB

货号: S220898

产品全名: SERINC1 兔多抗

基因符号 TDE2; TMS2; TDE1L; TMS-2

UNIPROT ID: Q9NRX5 (Gene Accession - NP_065806)

背景: Serine incorporator 1 is a protein that in humans is encoded by the SERINC1 gene. Enhances the incorporation of serine into phosphatidylserine and sphingolipids. Interacts with SPTLC1.

抗原: Synthetic peptide of human SERINC1

经过测试的应用: ELISA, IHC

推荐稀释比: IHC: 25-100; ELISA: 1000-2000

种属反应性: Rabbit

克隆性: Rabbit Polyclonal

亚型: Immunogen-specific rabbit IgG

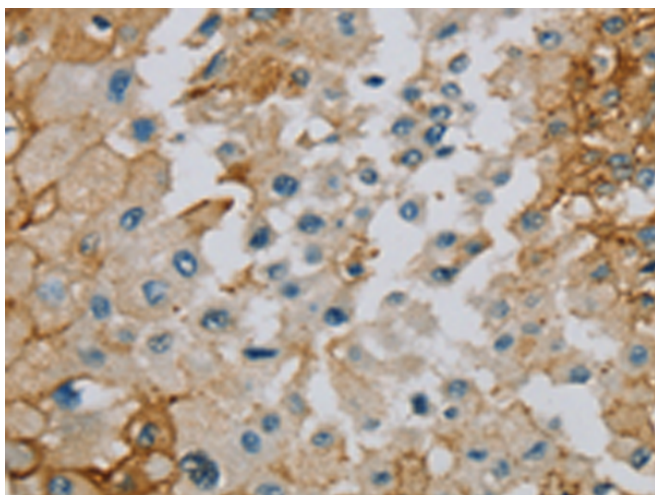
纯化: Antigen affinity purification

种属反应性: Human

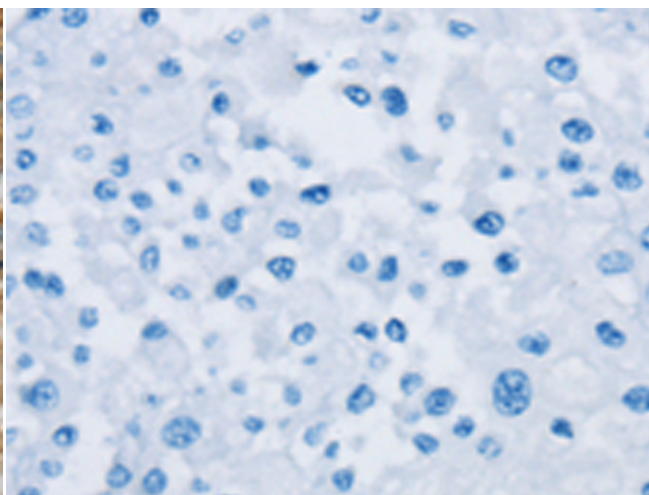
成分: PBS (without Mg²⁺ and Ca²⁺), pH 7.4, 150 mM NaCl, 0.05% Sodium Azide and 40% glycerol

研究领域: Metabolism

储存和运输: Store at -20°C. Avoid repeated freezing and thawing



Immunohistochemistry analysis of paraffin embedded Human prostate cancer tissue using 220898(SERINC1 Antibody) at a dilution of 1/40(Cytoplasm).



In comparison with the IHC on the left, the same paraffin-embedded Human prostate cancer tissue is first treated with the synthetic peptide and then with 220898(Anti-SERINC1 Antibody) at dilution 1/40.