

SERCA2 ATPASE RABBIT MAB

货号: N262884

产品全名: SERCA2 ATPase 兔单克隆抗体

基因符号 ATP2A2; ATP2B; Sarcoplasmic/endoplasmic reticulum calcium ATPase 2; SERCA2; SR Ca(2+)-ATPase 2; Calcium pump 2; Calcium-transporting ATPase sarcoplasmic reticulum type; slow twitch skeletal muscle isoform; Endoplasmic reticulum class 1/2 Ca(2+) ATPase

UNIPROT ID: P16615

背景: This magnesium-dependent enzyme catalyzes the hydrolysis of ATP coupled with the translocation of calcium from the cytosol to the sarcoplasmic reticulum lumen. Isoform 2 is involved in the regulation of the contraction/relaxation cycle.

抗原: A synthetic peptide of human SERCA2 ATPase

经过测试的应用: WB,IHC-F,IHC-P,ICC/IF

推荐稀释比: WB: 1/500-1/1000 IHC: 1/50-1/100 IF: 1/50-1/200

种属反应性: Rabbit

克隆性: Rabbit Monoclonal

克隆编号: R09-1G2

分子量: Calculated MW: 115 kDa; Observed MW: 115 kDa

亚型: IgG

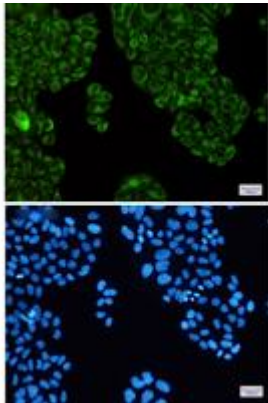
纯化: Affinity Purified

种属反应性: Human,Rat

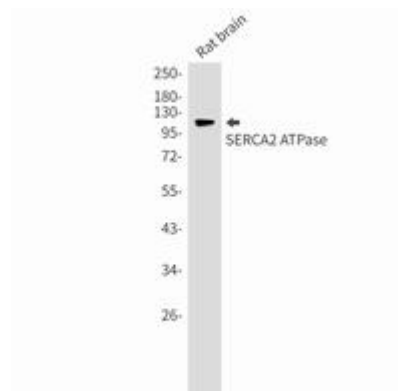
成分: PBS (without Mg²⁺ and Ca²⁺), pH 7.3 containing 50% glycerol, 0.5% BSA and 0.02% sodium azide

研究领域: Neuroscience

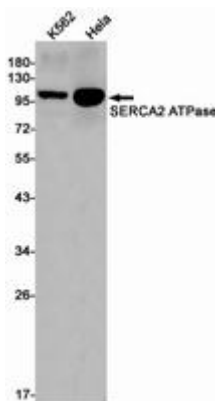
储存和运输: Store at -20°C. Avoid repeated freezing and thawing



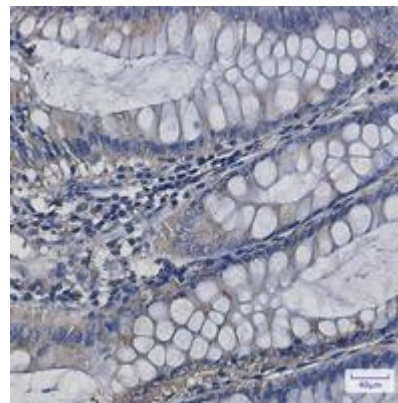
Immunocytochemistry analysis of SERCA2 ATPase (green) in HeLa using SERCA2 ATPase antibody, and DAPI (blue)



Western blot analysis of SERCA2 ATPase in rat brain lysates using SERCA2 ATPase antibody.



Western blot analysis of SERCA2 ATPase in K562, HeLa lysates using SERCA2 ATPase antibody.



Immunohistochemistry analysis of paraffin-embedded Human colon cancer using SERCA2 ATPase antibody. High-pressure and temperature Sodium Citrate pH 6.0 was used for antigen retrieval.