

SEPTIN 8 RABBIT MAB

货号: N263544

产品全名: Septin 8 兔单克隆抗体

基因符号 SEP2; SEPT8

UNIPROT ID: Q92599

背景: Filament-forming cytoskeletal GTPase (By similarity).

抗原: A synthetic peptide of human Septin 8

经过测试的应用: WB,IP

推荐稀释比: WB: 1/500-1/1000 IP: 1/20

种属反应性: Rabbit

克隆性: Rabbit Monoclonal

克隆编号: R05-2C6

分子量: Calculated MW: 56 kDa; Observed MW: 56 kDa

亚型: IgG

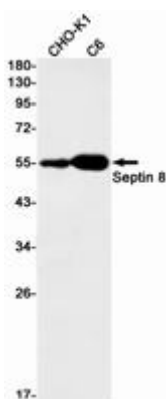
纯化: Affinity Purified

种属反应性: Hamster,Rat

成分: PBS (without Mg²⁺ and Ca²⁺), pH 7.3 containing 50% glycerol, 0.5% BSA and 0.02% sodium azide

研究领域: -

储存和运输: Store at -20°C. Avoid repeated freezing and thawing



Western blot analysis of Septin 8 in CHO-K1, C6 lysates using Septin 8 antibody.