

## SENPI RABBIT PAB

货号: N226025

产品全名: SENPI 兔多抗

基因符号 SENPI; SuPr2

**UNIPROT ID:** Q9P0U3

**背景:** Protease that catalyzes two essential functions in the SUMO pathway: processing of full-length SUMO1, SUMO2 and SUMO3 to their mature forms and deconjugation of SUMO1, SUMO2 and SUMO3 from targeted proteins.

**抗原:** A synthetic peptide of human SENPI

**经过测试的应用:** WB,IHC-F,IHC-P,ICC/IF,FC

**推荐稀释比:** WB: 1/500-1/1000 IHC: 1/50-1/100 IF: 1/50-1/200 FC: 1/50-1/100

**种属反应性:** Rabbit

**克隆性:** Rabbit Polyclonal

**分子量:** Calculated MW: 73 kDa; Observed MW: 76 kDa

**亚型:** IgG

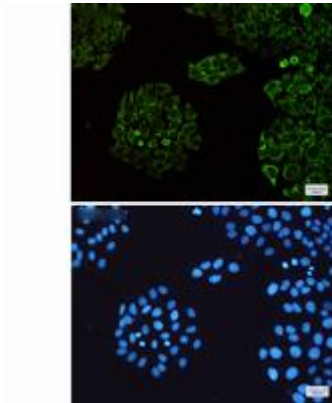
**纯化:** Affinity Purified

**种属反应性:** Human

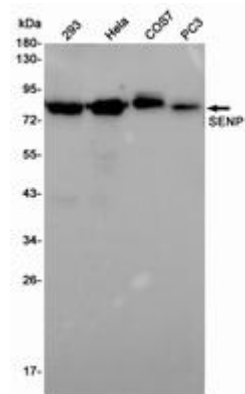
**成分:** PBS (without Mg<sup>2+</sup> and Ca<sup>2+</sup>), pH 7.3 containing 50% glycerol, 0.5% BSA and 0.02% sodium azide

**研究领域:** Cell Biology

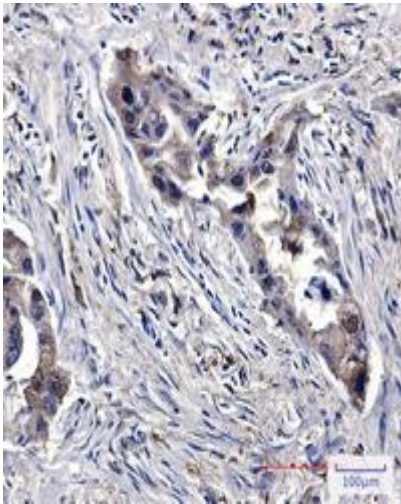
**储存和运输:** Store at -20°C. Avoid repeated freezing and thawing



Immunocytochemistry analysis of SENP1 (green) in HeLa using SENP1 antibody, and DAPI (blue)



Western blot analysis of SENP1 in 293, HeLa, COS7, PC-3 lysates using SENP1 antibody.



Immunohistochemistry analysis of paraffin-embedded Human lung cancer using SENP1 antibody. High-pressure and temperature Sodium Citrate pH 6.0 was used for antigen retrieval.