

SEMA7A RABBIT PAB

货号: S220894

产品全名: SEMA7A 兔多抗

基因符号: JMH; CD108; SEMAL; CDw108; SEMAK1; H-Sema-L; H-SEMA-K1

UNIPROT ID: O75326 (Gene Accession - NP_001139501)

背景: The protein encoded by this gene binds to cell surfaces through a glycosylphosphatidylinositol (GPI) linkage. The encoded glycoprotein is found on activated lymphocytes and erythrocytes. This protein may be involved in immunomodulatory and neuronal processes. Defects in this gene can result in loss of bone mineral density (BMD). Three transcript variants encoding different isoforms have been found for this gene.

抗原: Synthetic peptide of human SEMA7A

经过测试的应用: ELISA, IHC

推荐稀释比: IHC: 25-100; ELISA: 1000-2000

种属反应性: Rabbit

克隆性: Rabbit Polyclonal

亚型: Immunogen-specific rabbit IgG

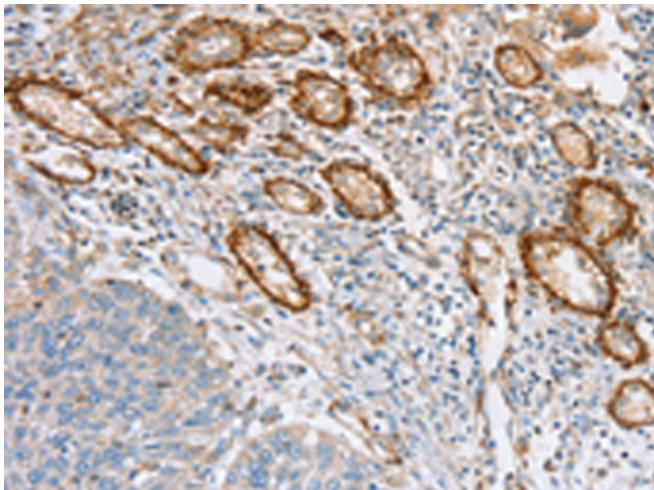
纯化: Antigen affinity purification

种属反应性: Human, Mouse

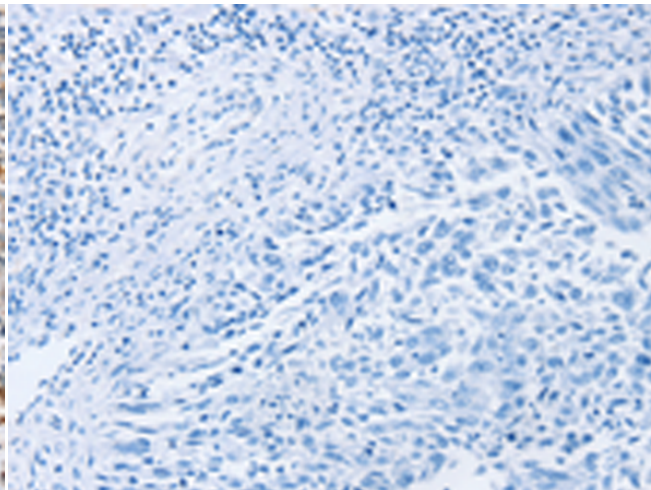
成分: PBS (without Mg²⁺ and Ca²⁺), pH 7.4, 150 mM NaCl, 0.05% Sodium Azide and 40% glycerol

研究领域: Neuroscience, Cardiovascular, Immunology

储存和运输: Store at -20°C. Avoid repeated freezing and thawing



Immunohistochemistry analysis of paraffin embedded Human lung cancer tissue using 220894(SEMA7A Antibody) at a dilution of 1/35(Cytoplasm or Cell membrane).



In comparison with the IHC on the left, the same paraffin-embedded Human lung cancer tissue is first treated with the synthetic peptide and then with 220894(Anti-SEMA7A Antibody) at dilution 1/35.