

SEMA3D RABBIT PAB

货号: S220197

产品全名: SEMA3D 兔多抗

基因符号: coll-2; Sema-Z2

UNIPROT ID: O95025 (Gene Accession - NP_689967.2)

背景: This gene belongs to the semaphorin family. Induces the collapse and paralysis of neuronal growth cones. Could potentially act as repulsive cues toward specific neuronal populations. Strong binding to neuropilin is mediated by the carboxy third of the protein.

抗原: Synthetic peptide of human SEMA3D

经过测试的应用: ELISA, IHC

推荐稀释比: IHC: 50-200; ELISA: 2000-5000

种属反应性: Rabbit

克隆性: Rabbit Polyclonal

亚型: Immunogen-specific rabbit IgG

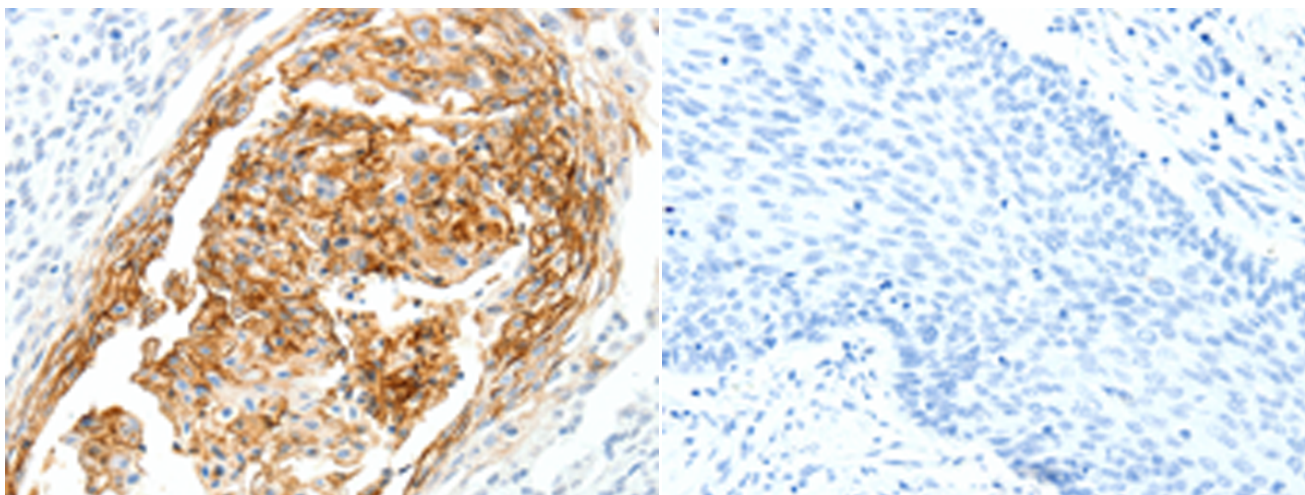
纯化: Antigen affinity purification

种属反应性: Human, Mouse

成分: PBS (without Mg²⁺ and Ca²⁺), pH 7.4, 150 mM NaCl, 0.05% Sodium Azide and 40% glycerol

研究领域: Neuroscience

储存和运输: Store at -20°C. Avoid repeated freezing and thawing



Immunohistochemistry analysis of paraffin embedded Human cervical cancer tissue using 220197 (SEMA3D Antibody) at a dilution of 1/40 (Cytoplasm, Cell membrane). In comparison with the IHC on the left, the same paraffin-embedded Human cervical cancer tissue is first treated with the synthetic peptide and then with 220197 (Anti-SEMA3D Antibody) at dilution 1/40.