

SEL1L RABBIT PAB

货号: S213962

产品全名: SEL1L 兔多抗

基因符号: Hrd3; SEL1L; PRO1063; SEL1-LIKE

UNIPROT ID: Q9UBV2 (Gene Accession - NP_005056.3)

背景: The protein encoded by this gene is part of a protein complex required for the retrotranslocation or dislocation of misfolded proteins from the endoplasmic reticulum lumen to the cytosol, where they are degraded by the proteasome in a ubiquitin-dependent manner. Alternatively spliced transcript variants encoding different isoforms have been found for this gene.

抗原: Synthetic peptide of human SEL1L

经过测试的应用: ELISA, IHC

推荐稀释比: IHC: 25-100; ELISA: 1000-5000

种属反应性: Rabbit

克隆性: Rabbit Polyclonal

亚型: Immunogen-specific rabbit IgG

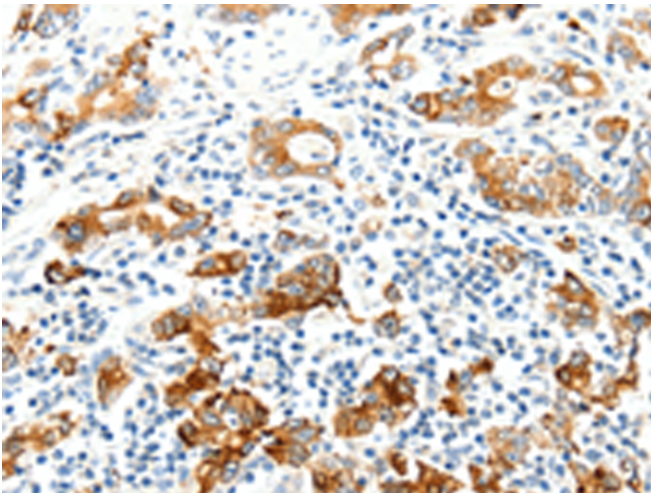
纯化: Antigen affinity purification

种属反应性: Human, Mouse, Rat

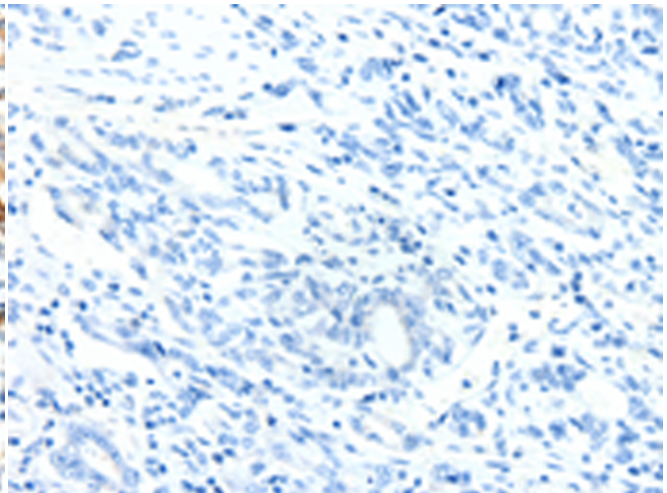
成分: PBS (without Mg²⁺ and Ca²⁺), pH 7.4, 150 mM NaCl, 0.05% Sodium Azide and 40% glycerol

研究领域: Signal Transduction, Cancer

储存和运输: Store at -20°C. Avoid repeated freezing and thawing



Immunohistochemistry analysis of paraffin embedded Human gastric cancer tissue using 213962 (SEL1L Antibody) at a dilution of 1/25 (Cytoplasm).



In comparison with the IHC on the left, the same paraffin-embedded Human gastric cancer tissue is first treated with the synthetic peptide and then with 213962 (Anti-SEL1L Antibody) at dilution 1/25.