

## SEH1L RABBIT MAB

货号: N262880

产品全名: SEH1L 兔单克隆抗体

基因符号 GATOR complex protein SEH1; Nup107-160 subcomplex subunit SEH1

**UNIPROT ID:** Q8R2U0

**背景:** Component of the Nup107-160 subcomplex of the nuclear pore complex (NPC). The Nup107-160 subcomplex is required for the assembly of a functional NPC. The Nup107-160 subcomplex is also required for normal kinetochore microtubule attachment, mitotic progression and chromosome segregation. This subunit plays a role in recruitment of the Nup107-160 subcomplex to the kinetochore.

**抗原:** A synthetic peptide of mouse SEH1L

**经过测试的应用:** WB,IP

**推荐稀释比:** WB: 1/500-1/1000 IP: 1/20

**种属反应性:** Rabbit

**克隆性:** Rabbit Monoclonal

**克隆编号:** R03-9E2

**分子量:** Calculated MW: 40 kDa; Observed MW: 40 kDa

**亚型:** IgG

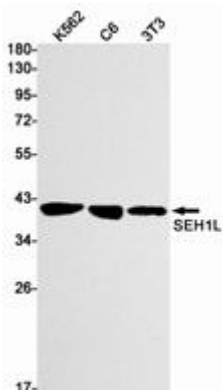
**纯化:** Affinity Purified

**种属反应性:** Human, Mouse and Rat

**成分:** PBS (without Mg<sup>2+</sup> and Ca<sup>2+</sup>), pH 7.3 containing 50% glycerol, 0.5% BSA and 0.02% sodium azide

**研究领域:** Epigenetics and Nuclear Signaling

**储存和运输:** Store at -20°C. Avoid repeated freezing and thawing



Western blot analysis of SEH1L in K562, C6, 3T3 lysates using SEH1L antibody.



# Product Description

Pioneering GTPase and Oncogene Product Development since 2010

---