

SEC11A RABBIT PAB

货号: S212522

产品全名: SEC11A 兔多抗

基因符号: SPC18; SPCS4A; SEC11L1; sid2895; 1810012E07Rik

UNIPROT ID: P67812 (Gene Accession - BC014508)

背景: This gene encodes a member of the peptidase S26B family. The encoded protein is an 18kDa subunit of the signal peptidase complex and has been linked to cell migration and invasion, gastric cancer and lymph node metastasis. Alternative splicing results in multiple transcript variants. A related pseudogene has been identified on chromosome 8.

抗原: Fusion protein of human SEC11A

经过测试的应用: ELISA, WB, IHC

推荐稀释比: IHC: 40-200;WB: 500-2000;ELISA: 5000-10000

种属反应性: Rabbit

克隆性: Rabbit Polyclonal

亚型: Immunogen-specific rabbit IgG

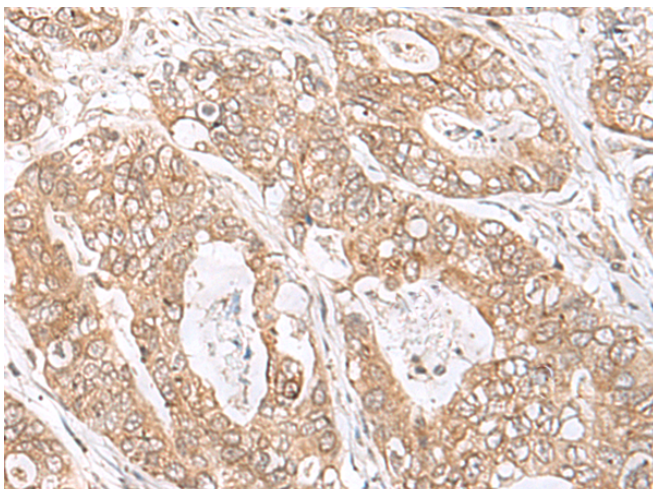
纯化: Antigen affinity purification

种属反应性: Human, Mouse, Rat

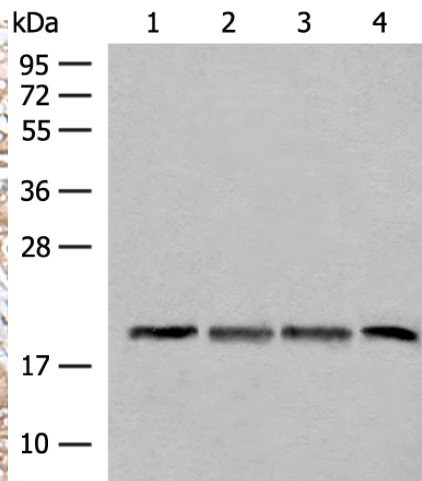
成分: PBS (without Mg²⁺ and Ca²⁺), pH 7.4, 150 mM NaCl, 0.05% Sodium Azide and 40% glycerol

研究领域: Cell Biology

储存和运输: Store at -20°C. Avoid repeated freezing and thawing



Immunohistochemistry analysis of paraffin-embedded Human gastric cancer tissue using 212522(SEC11A Antibody) at a dilution of 1/45(Cell membrane).



Gel: 12%SDS-PAGE, Lysate: 40 µg;
Lane 1-4: TM4, HEPG2 and A549 cell, Mouse liver tissue lysates;
Primary antibody: 212522(SEC11A Antibody) at dilution 1/300;
Secondary antibody: Goat anti rabbit IgG at 1/8000 dilution;
Exposure time: 3 seconds