

## SDHA RABBIT MAB

货号: N262876

产品全名: SDHA 兔单克隆抗体

基因符号 SDHA; SDH2; SDHF; Succinate dehydrogenase [ubiquinone] flavoprotein subunit; mitochondrial; Flavoprotein subunit of complex II; Fp

**UNIPROT ID:** P31040

背景: Flavoprotein (FP) subunit of succinate dehydrogenase (SDH) that is involved in complex II of the mitochondrial electron transport chain and is responsible for transferring electrons from succinate to ubiquinone.

抗原: A synthetic peptide of human SDHA

经过测试的应用: WB,IHC-F,IHC-P,ICC/IF,IP

推荐稀释比: WB: 1/500-1/1000 IHC: 1/50-1/100 IF: 1/50-1/200 IP: 1/20

种属反应性: Rabbit

克隆性: Rabbit Monoclonal

克隆编号: R09-5K6

分子量: Calculated MW: 73 kDa; Observed MW: 73 kDa

亚型: IgG

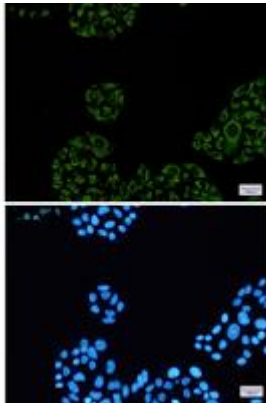
纯化: Affinity Purified

种属反应性: Human, Mouse and Rat

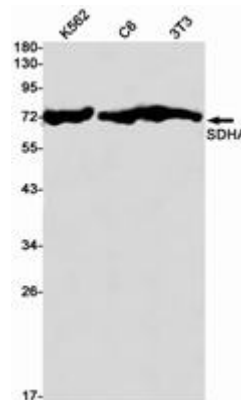
成分: PBS (without Mg<sup>2+</sup> and Ca<sup>2+</sup>), pH 7.3 containing 50% glycerol, 0.5% BSA and 0.02% sodium azide

研究领域: Tags & Cell Markers

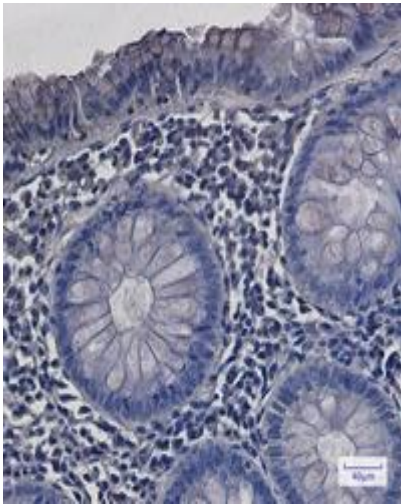
储存和运输: Store at -20°C. Avoid repeated freezing and thawing



Immunocytochemistry analysis of SDHA (green) in HeLa using SDHA antibody, and DAPI (blue)



Western blot analysis of SDHA in K562, C6, 3T3 lysates using SDHA antibody.



Immunohistochemistry analysis of paraffin-embedded Human colon cancer using SDHA antibody. High-pressure and temperature Sodium Citrate pH 6.0 was used for antigen retrieval.