

SDC3 RABBIT PAB

货号: S220989

产品全名: SDC3 兔多抗

基因符号: SDCN; SYND3

UNIPROT ID: O75056 (Gene Accession - NP_055469)

背景: The protein encoded by this gene belongs to the syndecan proteoglycan family. It may play a role in the organization of cell shape by affecting the actin cytoskeleton, possibly by transferring signals from the cell surface in a sugar-dependent mechanism. Allelic variants of this gene have been associated with obesity.

抗原: Synthetic peptide of human SDC3

经过测试的应用: ELISA, IHC

推荐稀释比: IHC: 40-150; ELISA: 2000-5000

种属反应性: Rabbit

克隆性: Rabbit Polyclonal

亚型: Immunogen-specific rabbit IgG

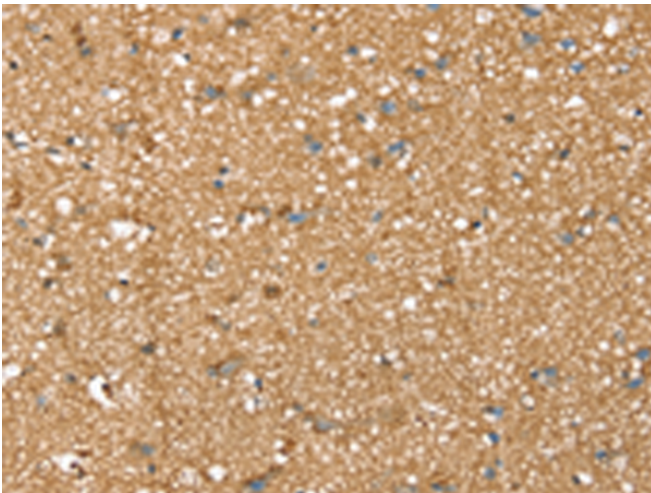
纯化: Antigen affinity purification

种属反应性: Human, Mouse, Rat

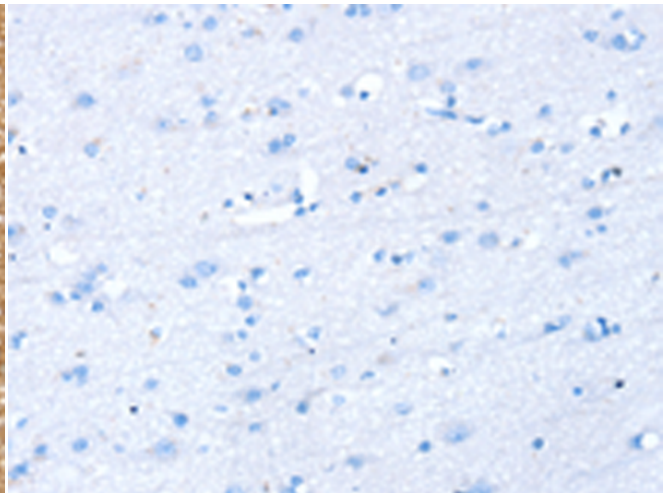
成分: PBS (without Mg²⁺ and Ca²⁺), pH 7.4, 150 mM NaCl, 0.05% Sodium Azide and 40% glycerol

研究领域: Signal Transduction

储存和运输: Store at -20°C. Avoid repeated freezing and thawing



Immunohistochemistry analysis of paraffin embedded Human brain tissue using 220989 (SDC3 Antibody) at a dilution of 1/45 (Cytoplasm and Cell membrane).



In comparison with the IHC on the left, the same paraffin-embedded Human brain tissue is first treated with the synthetic peptide and then with 220989 (Anti-SDC3 Antibody) at dilution 1/45.