

SCPEP1 RABBIT PAB

货号: S217767

产品全名: SCPEP1 兔多抗

基因符号: RISC; HSCP1

UNIPROT ID: Q9HB40 (Gene Accession - BC072405)

背景: Retinoid-inducible serine carboxypeptidase is an enzyme that in humans is encoded by the SCPEP1 gene. May be involved in vascular wall and kidney homeostasis.

抗原: Fusion protein of human SCPEP1

经过测试的应用: ELISA, IHC

推荐稀释比: IHC: 20-100; ELISA: 2000-5000

种属反应性: Rabbit

克隆性: Rabbit Polyclonal

亚型: Immunogen-specific rabbit IgG

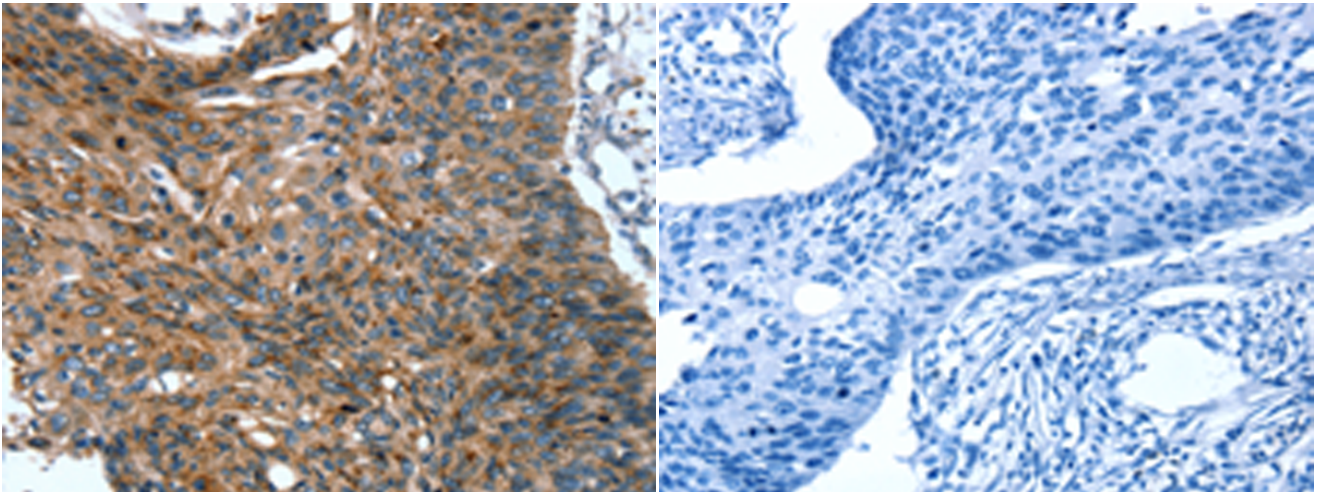
纯化: Antigen affinity purification

种属反应性: Human, Mouse, Rat

成分: PBS (without Mg²⁺ and Ca²⁺), pH 7.4, 150 mM NaCl, 0.05% Sodium Azide and 40% glycerol

研究领域: Cell Biology, Cardiovascular

储存和运输: Store at -20°C. Avoid repeated freezing and thawing



Immunohistochemistry analysis of paraffin embedded Human esophagus cancer tissue using 217767(SCPEP1 Antibody) at a dilution of 1/20(Cytoplasm).

In comparison with the IHC on the left, the same paraffin-embedded Human esophagus cancer tissue is first treated with the fusion protein and then with 217767(Anti-SCPEP1 Antibody) at dilution 1/20.