

SCN9A RABBIT PAB

货号: S214653

产品全名: SCN9A 兔多抗

基因符号: PNI; ETHA; NENA; SFNP; FEB3B; NE-NA; GEFSP7; Nav1.7

UNIPROT ID: Q15858 (Gene Accession - NP_002968)

背景: This gene encodes a voltage-gated sodium channel which plays a significant role in nociception signaling. Mutations in this gene have been associated with primary erythralgia, channelopathy-associated insensitivity to pain, and paroxysmal extreme pain disorder.

抗原: Synthetic peptide of human SCN9A

经过测试的应用: ELISA, IHC

推荐稀释比: IHC: Oct-50; ELISA: 1000-2000

种属反应性: Rabbit

克隆性: Rabbit Polyclonal

亚型: Immunogen-specific rabbit IgG

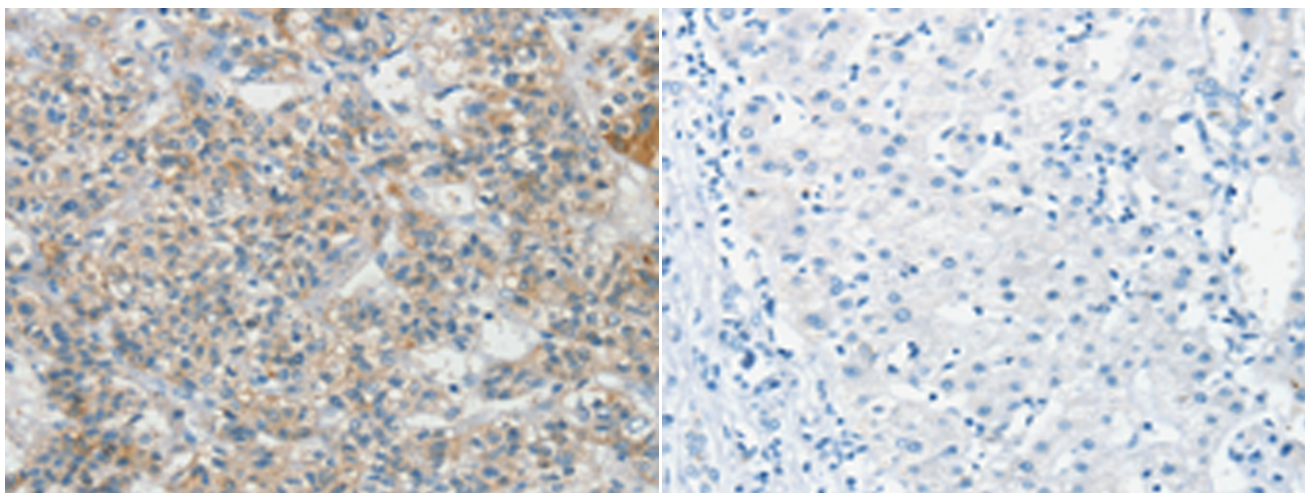
纯化: Antigen affinity purification

种属反应性: Human

成分: PBS (without Mg²⁺ and Ca²⁺), pH 7.4, 150 mM NaCl, 0.05% Sodium Azide and 40% glycerol

研究领域: Metabolism, Neuroscience

储存和运输: Store at -20°C. Avoid repeated freezing and thawing



Immunohistochemistry analysis of paraffin embedded Human liver cancer tissue using 214653(SCN9A Antibody) at a dilution of 1/20(Cell membrane). In comparison with the IHC on the left, the same paraffin-embedded Human liver cancer tissue is first treated with the synthetic peptide and then with 214653(Anti-SCN9A Antibody) at dilution 1/20.