

SCN5A RABBIT PAB

货号: S221801

产品全名: SCN5A 兔多抗

基因符号 HB1; HB2; HH1; IVF; VF1; HBB2; ICCD; LQT3; SSS1; CDCD2; CMDIE; CMPD2; PFHB1; Nav1.5

UNIPROT ID: Q14524 (Gene Accession - NP_000326)

背景: The protein encoded by this gene is an integral membrane protein and tetrodotoxin-resistant voltage-gated sodium channel subunit. This protein is found primarily in cardiac muscle and is responsible for the initial upstroke of the action potential in an electrocardiogram. Defects in this gene are a cause of long QT syndrome type 3 (LQT3), an autosomal dominant cardiac disease. Alternative splicing results in several transcript variants encoding different isoforms.

抗原: Synthetic peptide of human SCN5A

经过测试的应用: ELISA, IHC

推荐稀释比: IHC: 25-100; ELISA: 5000-10000

种属反应性: Rabbit

克隆性: Rabbit Polyclonal

亚型: Immunogen-specific rabbit IgG

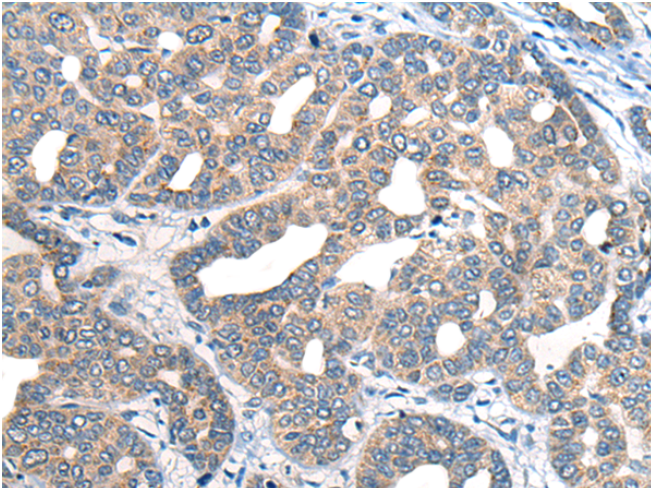
纯化: Antigen affinity purification

种属反应性: Human, Mouse, Rat

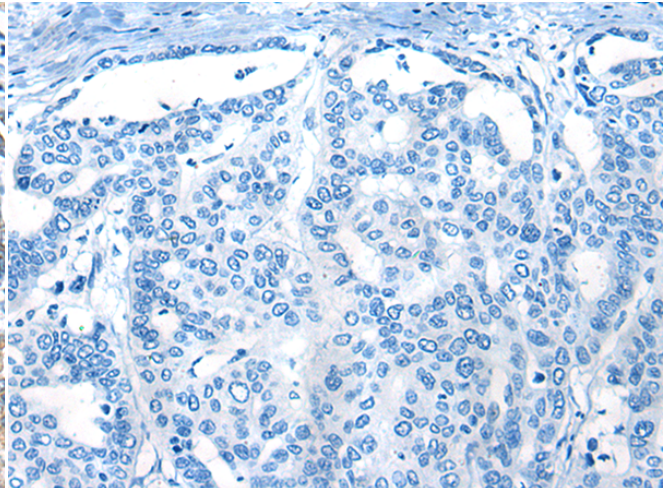
成分: PBS (without Mg²⁺ and Ca²⁺), pH 7.4, 150 mM NaCl, 0.05% Sodium Azide and 40% glycerol

研究领域: Neuroscience, Cardiovascular

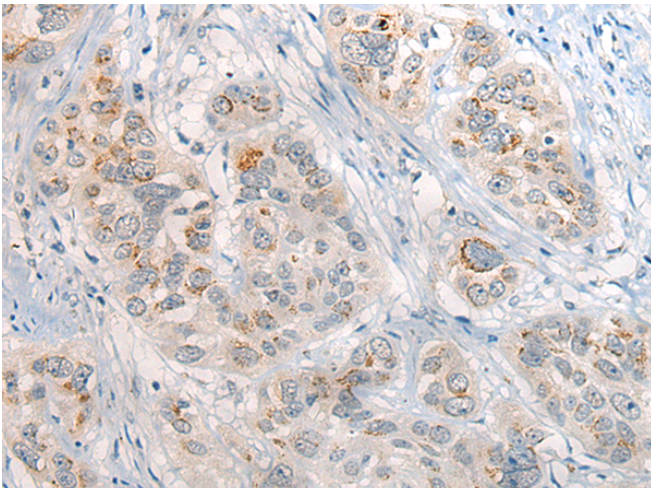
储存和运输: Store at -20°C. Avoid repeated freezing and thawing



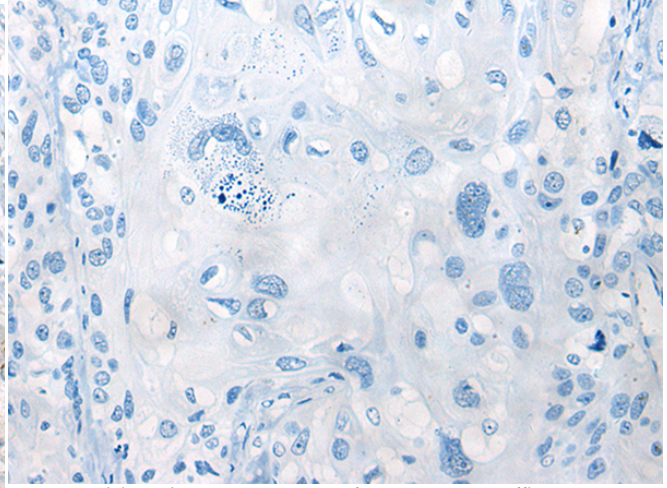
Immunohistochemistry analysis of paraffin embedded Human liver cancer tissue using 221801(SCN5A Antibody) at a dilution of 1/40(Cell membrane).



In comparison with the IHC on the left, the same paraffin-embedded Human liver cancer tissue is first treated with the synthetic peptide and then with 221801(Anti-SCN5A Antibody) at dilution 1/40.



The image on the left is immunohistochemistry of paraffin-embedded Human esophagus cancer tissue using 221801(Anti-SCN5A Antibody) at a dilution of 1/40.



In comparison with the IHC on the left, the same paraffin-embedded Human esophagus cancer tissue is first treated with synthetic peptide and then with D263554(Anti-SCN5A Antibody) at dilution 1/40.

