

SCML2 RABBIT PAB

货号: N225166

产品全名: SCML2 兔多抗

基因符号 SCML2; Sex comb on midleg-like protein 2

UNIPROT ID: Q9UQR0

背景: Putative Polycomb group (PcG) protein.

抗原: Synthesized peptide derived from the Internal region of human SCML2.

经过测试的应用: WB,ELISA

推荐稀释比: WB: 1/500-1/1000 ELISA: 1/10000

种属反应性: Rabbit

克隆性: Rabbit Polyclonal

分子量: Calculated MW: 77 kDa; Observed MW: 77 kDa

亚型: IgG

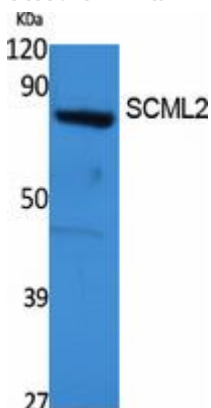
纯化: Affinity Purified

种属反应性: Human

成分: PBS (without Mg²⁺ and Ca²⁺), pH 7.3 containing 50% glycerol, 0.5% BSA and 0.02% sodium azide

研究领域: Epigenetics and Nuclear Signaling

储存和运输: Store at -20°C. Avoid repeated freezing and thawing



Western blot analysis of SCML2 in 293 lysates using SCML2 antibody.