

SCMH1 RABBIT PAB

货号: S218765

产品全名: SCMH1 兔多抗

基因符号 Scml3

UNIPROT ID: Q96GD3 (Gene Accession - BC009752)

背景: Associates with Polycomb group (PcG) multiprotein complexes; the complex class is required to maintain the transcriptionally repressive state of some genes.

抗原: Fusion protein of human SCMH1

经过测试的应用: ELISA, WB, IHC

推荐稀释比: IHC: 100-300;WB: 500-2000;ELISA: 5000-10000

种属反应性: Rabbit

克隆性: Rabbit Polyclonal

亚型: Immunogen-specific rabbit IgG

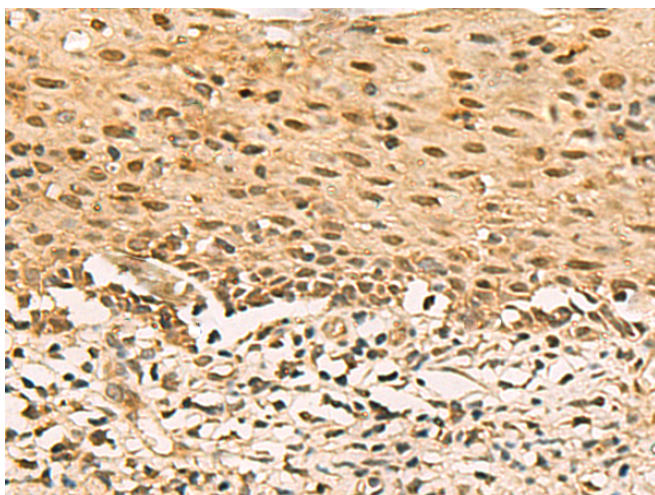
纯化: Antigen affinity purification

种属反应性: Human, Mouse

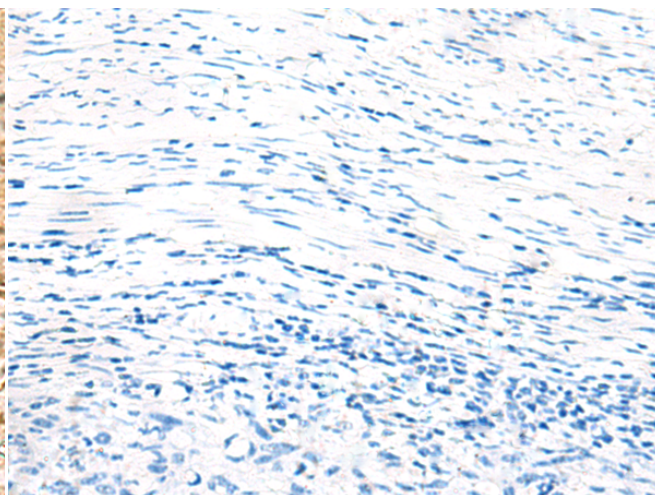
成分: PBS (without Mg²⁺ and Ca²⁺), pH 7.4, 150 mM NaCl, 0.05% Sodium Azide and 40% glycerol

研究领域: Epigenetics and Nuclear Signaling

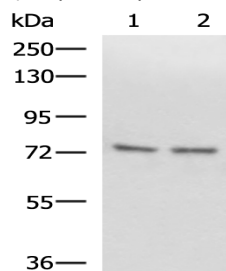
储存和运输: Store at -20°C. Avoid repeated freezing and thawing



Immunohistochemistry analysis of paraffin embedded Human cervical cancer tissue using 218765 (SCMH1 Antibody) at a dilution of 1/120 (Nucleus).



In comparison with the IHC on the left, the same paraffin-embedded Human cervical cancer tissue is first treated with the fusion protein and then with 218765 (Anti-SCMH1 Antibody) at dilution 1/120.



Gel: 6%SDS-PAGE, Lysate: 40 µg;

Lane 1-2: Raji and 231 cell lysates;

Primary antibody: 218765 (SCMH1 Antibody) at dilution 1/1000;

Secondary antibody: HRP-conjugated Goat anti rabbit IgG at 1/5000 dilution;

Exposure time: 1 minute