

SCGB3A1 RABBIT PAB

货号: S220880

产品全名: SCGB3A1 兔多抗

基因符号 HIN1; HIN-1; LU105; UGRP2; PnSP-2

UNIPROT ID: Q96QR1 (Gene Accession - NP_443095)

背景: Potential growth inhibitory cytokine.

抗原: Synthetic peptide of human SCGB3A1

经过测试的应用: ELISA, IHC

推荐稀释比: IHC: 25-100; ELISA: 5000-10000

种属反应性: Rabbit

克隆性: Rabbit Polyclonal

亚型: Immunogen-specific rabbit IgG

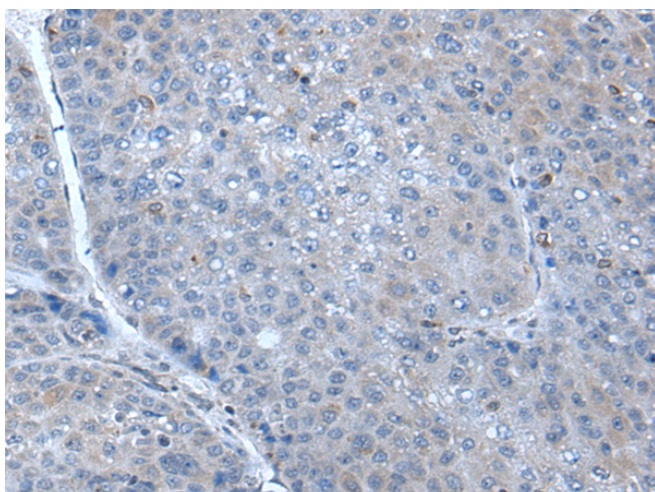
纯化: Antigen affinity purification

种属反应性: Human, Mouse

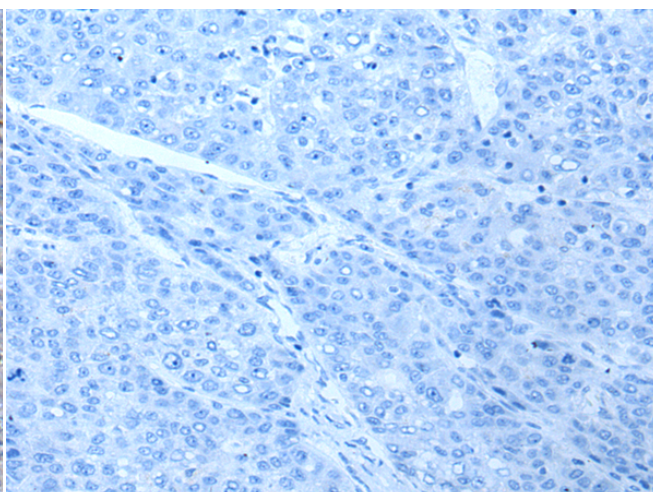
成分: PBS (without Mg²⁺ and Ca²⁺), pH 7.4, 150 mM NaCl, 0.05% Sodium Azide and 40% glycerol

研究领域: Signal Transduction, Cancer, Immunology

储存和运输: Store at -20°C. Avoid repeated freezing and thawing



Immunohistochemistry analysis of paraffin embedded Human liver cancer tissue using 220880(SCGB3A1 Antibody) at a dilution of 1/25 (Secreted).



In comparison with the IHC on the left, the same paraffin-embedded Human liver cancer tissue is first treated with the synthetic peptide and then with 220880(Anti-SCGB3A1 Antibody) at dilution 1/25.