

SCGB2A1 RABBIT PAB

货号: S217675

产品全名: SCGB2A1 兔多抗

基因符号: LPHC; LPNC; MGB2; UGB3

UNIPROT ID: O75556 (Gene Accession - BC062218)

背景: Involved in androgen receptor signaling pathway. Located in extracellular space. [provided by Alliance of Genome Resources, Apr 2022]

抗原: Fusion protein of human SCGB2A1

经过测试的应用: ELISA, IHC

推荐稀释比: IHC: 100-300; ELISA: 5000-10000

种属反应性: Rabbit

克隆性: Rabbit Polyclonal

亚型: Immunogen-specific rabbit IgG

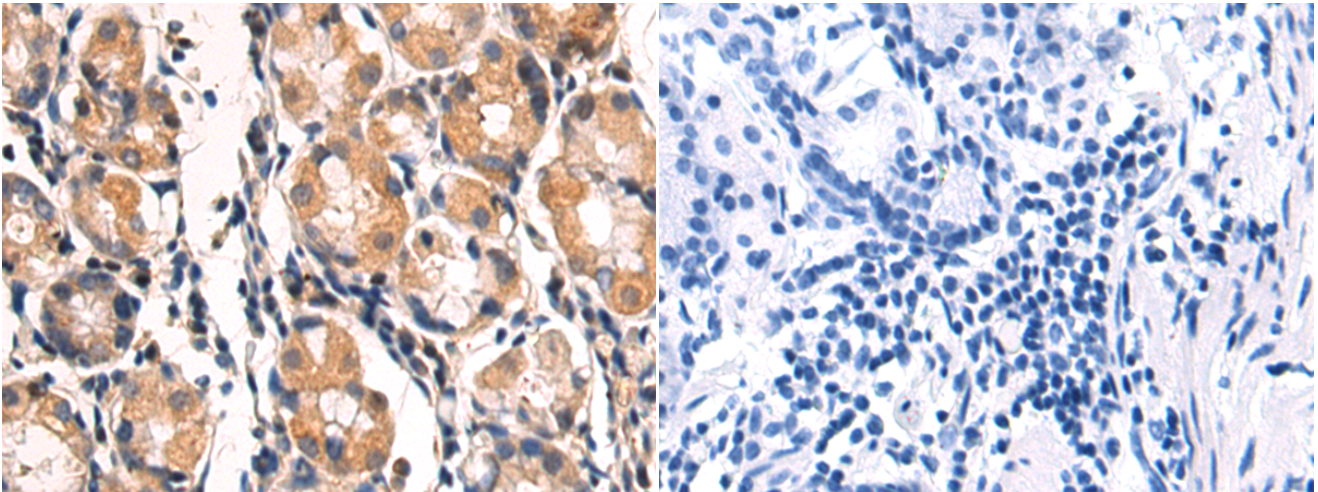
纯化: Antigen affinity purification

种属反应性: Human

成分: PBS (without Mg²⁺ and Ca²⁺), pH 7.4, 150 mM NaCl, 0.05% Sodium Azide and 40% glycerol

研究领域: Signal Transduction, Cancer

储存和运输: Store at -20°C. Avoid repeated freezing and thawing



Immunohistochemistry analysis of paraffin embedded Human gastric cancer tissue using 217675(SCGB2A1 Antibody) at a dilution of 1/100(Cytoplasm).

In comparison with the IHC on the left, the same paraffin-embedded Human gastric cancer tissue is first treated with the fusion protein and then with 217675(Anti-SCGB2A1 Antibody) at dilution 1/100.